



Invacare® P9000XDT



Spare Parts Catalogue

All information, including pricing and specifications, subject to change without prior notice. Photographs are for illustration purposes only & may vary from actual product. Invacare®, and Yes, you can., are trademarks of Invacare Corporation. © 2009 Invacare Corporation.



CONTENTS

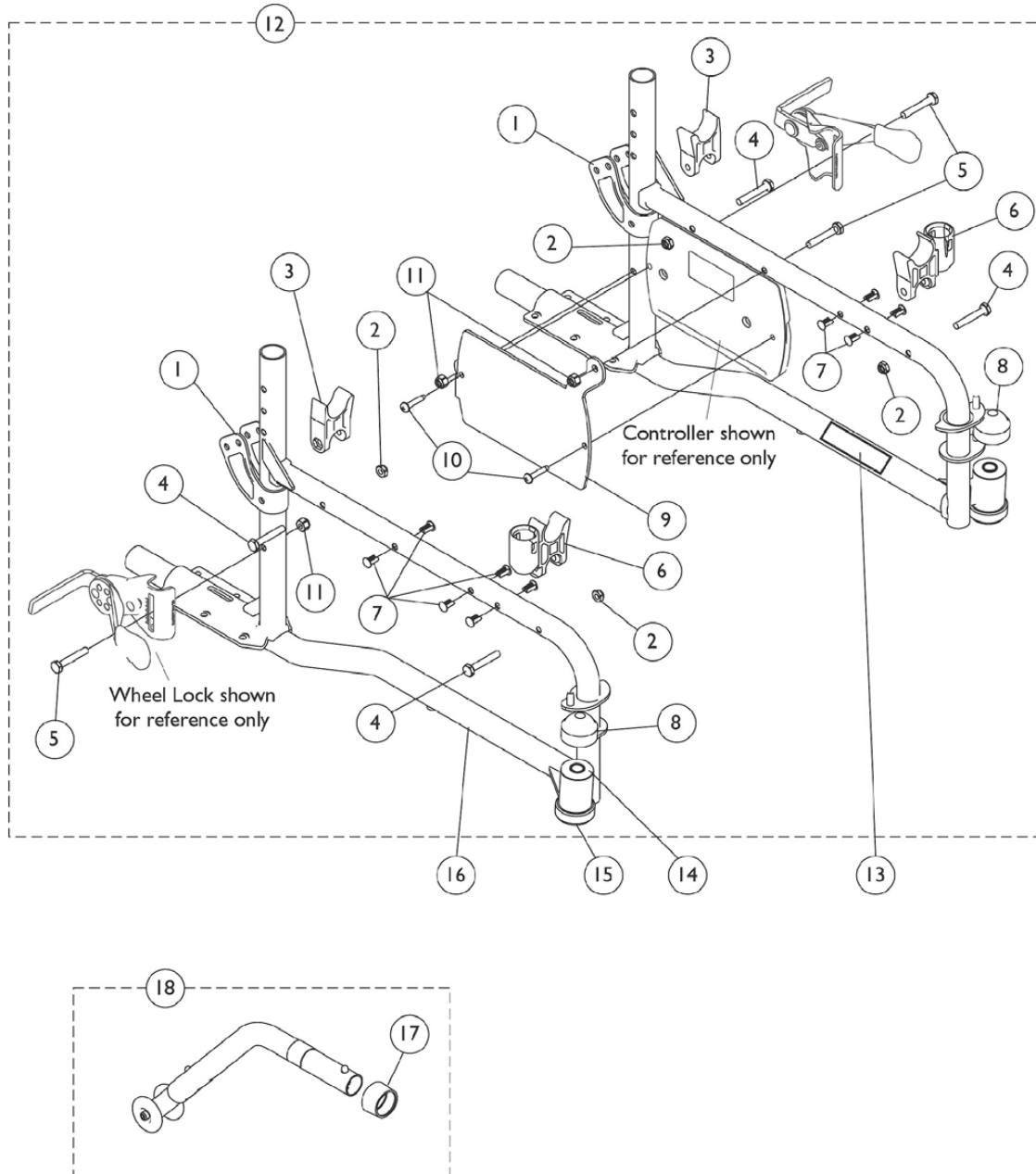
Frames, Frame Hardware, and Anti-Tips	3
Crossbraces and Hardware	5
Back Canes and Attaching Hardware	6
Seat / Back Upholstery and Positioning Strap	7
Adjustable Height Space Saver Arms 79/89 Style Arm	8
Casters, Forks, and Hardware	9
Battery Tray, Battery Boxes, and Battery Charger	10
Footrest Support Assembly T93H	12
Legrest Support Assembly PH904A	13
Pivot Slide Tube w Footplate - Footrest T93HA	15
Heel Loops	16
MK5 CSPJ Joystick	17
MK5 NX Controller	18
Motors, Drive Wheels, and Attaching Hardware	19

For any order of spare parts for P9000XDT models, the following information is required:

- Type of Chair
- Serial Number
- Part Number
- Part Description



Frames, Frame Hardware, and Anti-Tips



All information, including pricing and specifications, subject to change without prior notice. Photographs are for illustration purposes only & may vary from actual product. Invacare®, and Yes, you can., are trademarks of Invacare Corporation. © 2009 Invacare Corporation.



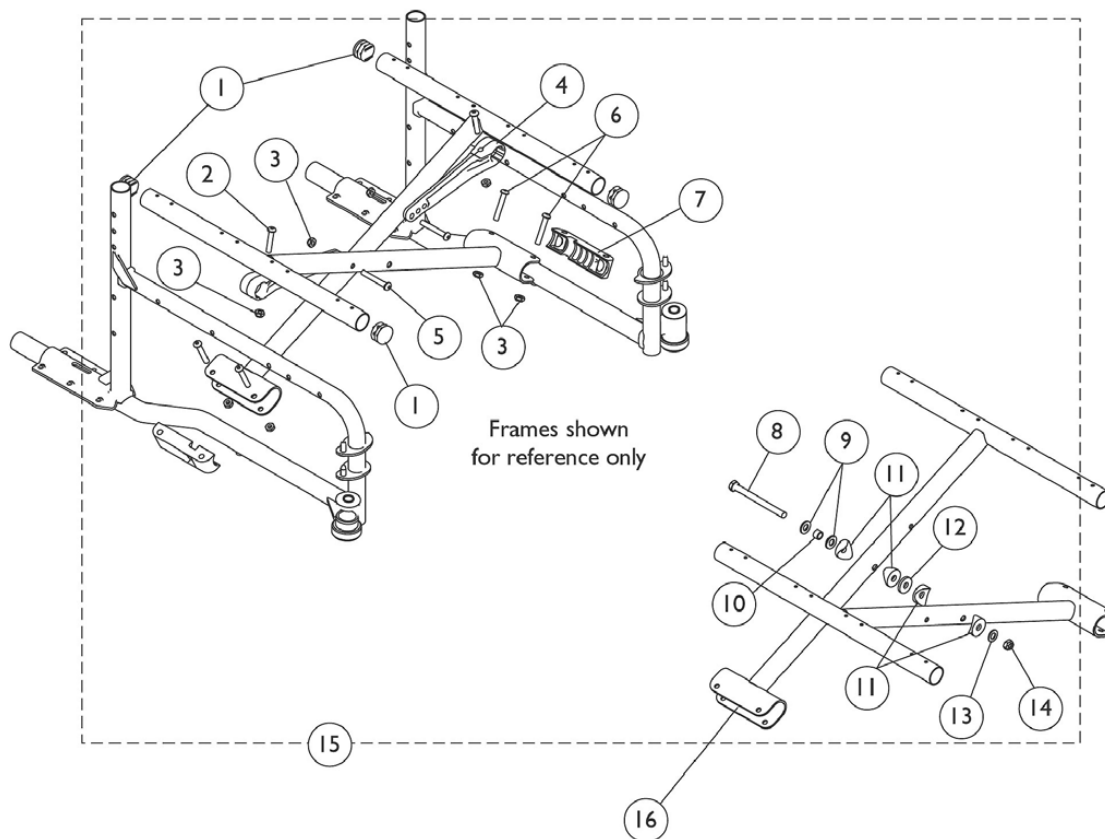
Frames, Frame Hardware, and Anti-Tips

Frames, Frame Hardware, and Anti-Tips		
Item	Part Code	Description
Critical Spare Parts		
5	1030949	Screw, Hex Head (1/4-20 x 1-1/2")
6	1109938	"H" Block with Socket Cup (Includes items 1-11)
9	1121213	Bracket, Controller Mounting
10	1113439	Screw, Phillips Pan Head Tap (#10-32 x 1")
12	1121226	Hardware, Frame (1 Pair)
16	1121207	Frame Assembly with Bearings –Right (Includes items 14-15)
16	1121208	Frame Assembly with Bearings –Left (Includes items 14-15)
18	1058752	Anti-Tipper, Rear with Instruction Sheet (1 Pair) (Includes 2 Anti-Tippers and Instruction Sheet)
By Order Parts		
1	1066261	Bracket, Armrest (Black)
2	60275X000	Locknut (1/4-20)
3	1107805	H-Block
4	16720X004	Screw, Hex Head (1/4-20 x 1-1/2")
7	1023450	Rivet, Ratchet
8	1001843	Cap, Head Tube (Black)
11	1025736	Locknut (1/4-20)
14	1065530	Bearing (7/16")
15	1074930	Bearing (Adult/Hemi)

All information, including pricing and specifications, subject to change without prior notice. Photographs are for illustration purposes only & may vary from actual product. Invacare®, and Yes, you can., are trademarks of Invacare Corporation. © 2009 Invacare Corporation.



Crossbraces and Hardware

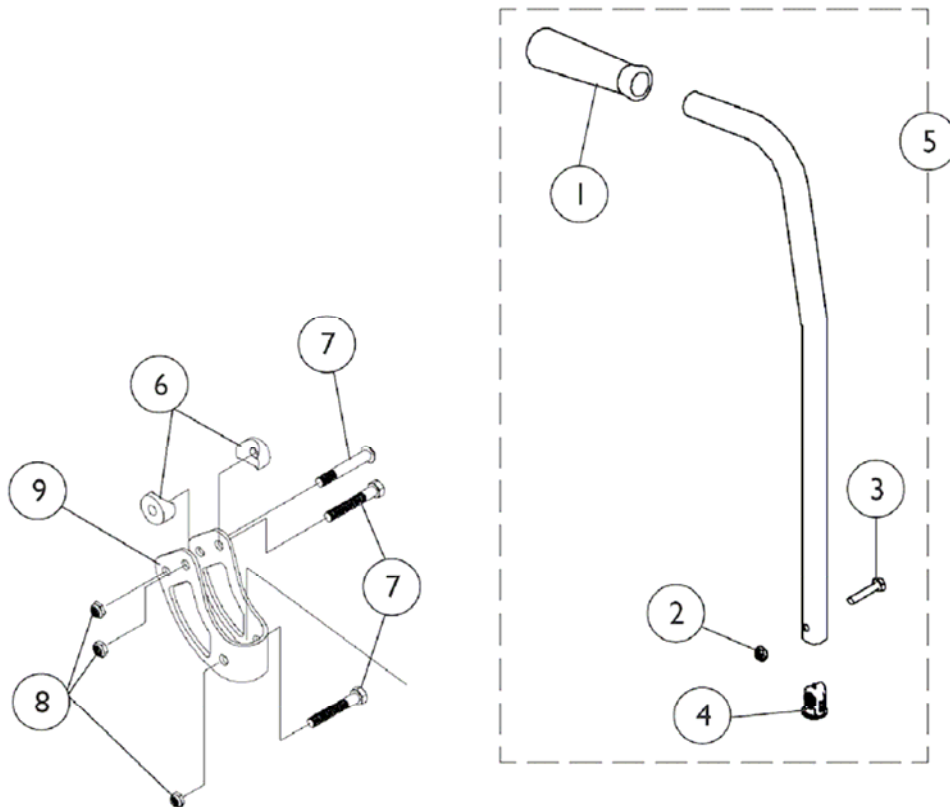


Crossbraces and Hardware		
Item	Part Code	Description
Critical Spare Parts		
7	1012172	Clamp, Saddle
15	1121209	Hardware, Crossbrace (1 Pair) (Includes items 1-14)
16	1109961	Crossbrace Assembly (18" W) Black
By Order Parts		
1	1029501	Plug Button, Black (1")
2	1008432	Screw, Socket Button Head (1/4-20 x 1-1/4")
3	60275X000	Locknut (1/4-20)
4	1110001	Pivot Link (16-18")
5	1001762	Screw, Socket Button Head (1/4-20 x 1-3/4")
6	1008495	Screw, Socket Button Head (1/4-20 x 1-1/2")
8	1098625	Screw, Hex Head (5/16-24 x 3-1/2")
9	16308X000	Washer, Flat (5/16 x 11/16 x 1/16")
10	1037913	Bushing (5/16 x 7/16 x 9/32")
11	1016263	Spacer, Coved (3/4 x 1 x 1/2")
12	1016301	Washer, Nylon (5/16 x 7/8 x 1/8")
13	1025704	Washer, Flat (5/16 x 5/8 x 1/16")

All information, including pricing and specifications, subject to change without prior notice. Photographs are for illustration purposes only & may vary from actual product. Invacare®, and Yes, you can., are trademarks of Invacare Corporation. © 2009 Invacare Corporation.



Back Canes and Attaching Hardware

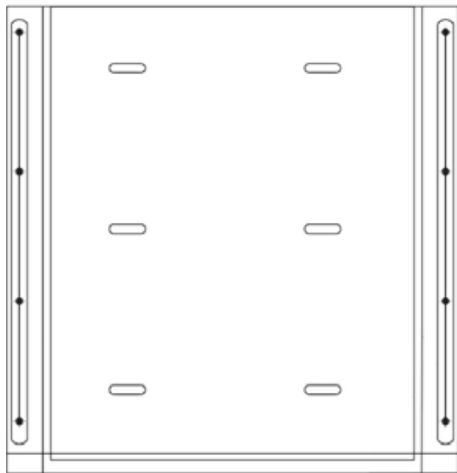


Back Canes and Attaching Hardware		
Item	Part Code	Description
Critical Spare Parts		
1	1057248	Grip, Foam (4-3/4")
5	1091103	Back Cane with Grip & Hardware (Includes items 1-4)
6	1025457	Spacer; Coved (1/4 x 3/4 x 11/32")
7	1030949	Screw; Hex Head (1/4-20 x 1-1/2")
By Order Parts		
2	60275X000	Locknut (1/4-20)
3	1057955	Screw, Hex Head (1/4-20 x 1-1/4")
4	1056551	Insert

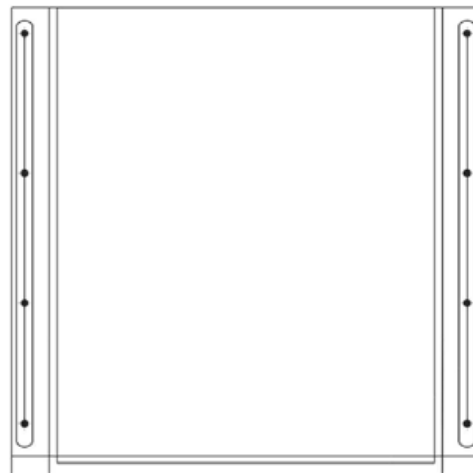
All information, including pricing and specifications, subject to change without prior notice. Photographs are for illustration purposes only & may vary from actual product. Invacare®, and Yes, you can., are trademarks of Invacare Corporation. © 2009 Invacare Corporation.



Seat / Back Upholstery and Positioning Strap



Seat Upholstery - Nylon



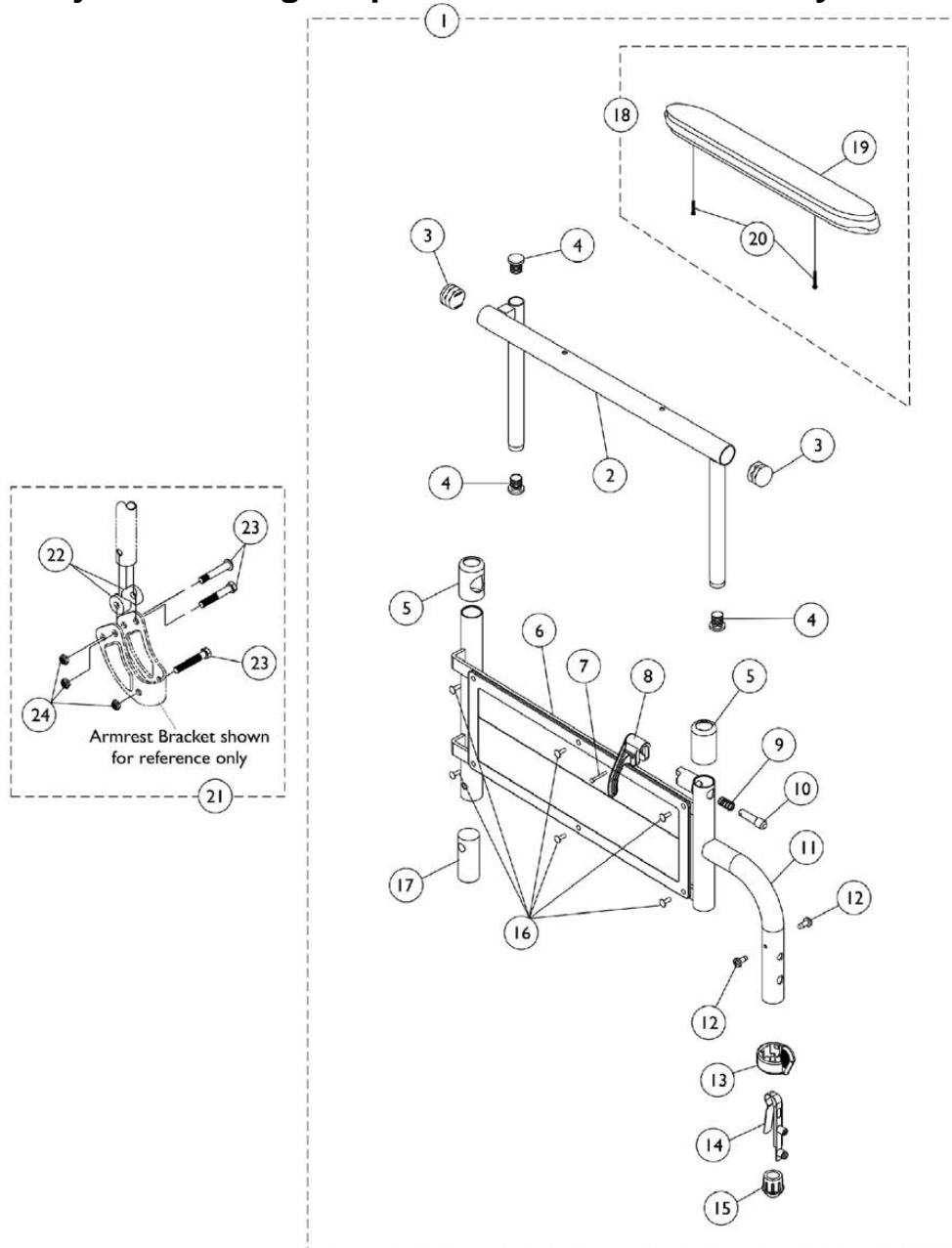
Back Upholstery - Nylon

Seat / Back Upholstery and Positioning Strap		
Item	Part Code	Description
Critical Spare Parts		
N/A	1127533	Seat Upholstery Size 18"W x 16"D (Includes 12ea. Screws w/Washers (#10 x 7/8"))
N/A	1127534	Seat Upholstery Size 18"W x 18"D (Includes 12ea. Screws w/Washers (#10 x 7/8"))
N/A	1091073	Back Upholstery Size 17-19" High (Includes 6ea. Screws w/Washers (#10 x 7/8"))
N/A	1004310	Positioning Strap - Auto Style Buckle

All information, including pricing and specifications, subject to change without prior notice. Photographs are for illustration purposes only & may vary from actual product. Invacare®, and Yes, you can., are trademarks of Invacare Corporation. © 2009 Invacare Corporation.



Adjustable Height Space Saver Arms 79/89 Style Arm



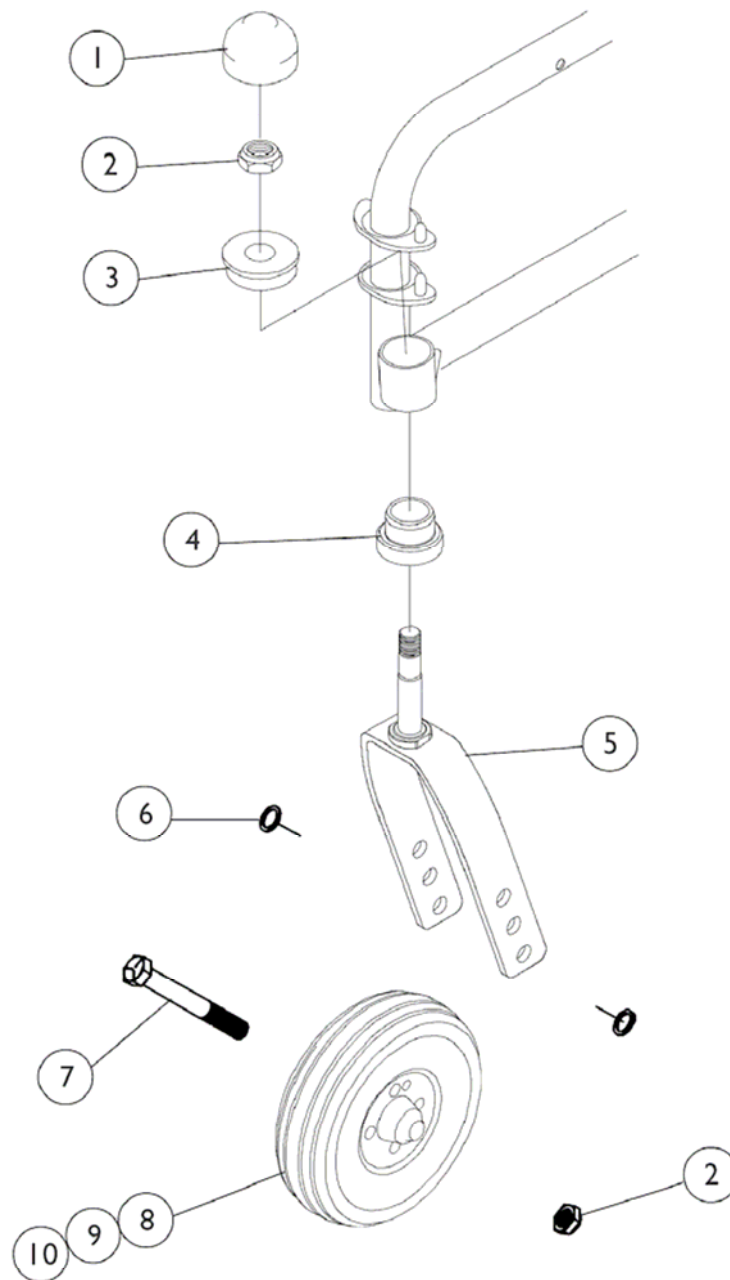
Adjustable Height Space Saver Arms 79/89 Style Arm		
Item	Part Code	Description
Critical Spare Parts		
1	1135546	Kit, Armrest, Desk Length, Black - Right (Style 89) (Includes items 2-20)*
1	1135547	Kit, Armrest, Desk Length, Black - Left (Style 89) (Includes items 2-20)*
18	1127510	Kit, Arm Pad w/Screws - Desk Length (Includes items 19-20)*
21	1121529	Kit, Arm Attaching Hardware (Includes items 22-24)

* Specify upholstery color U67 (Black) when ordering

All information, including pricing and specifications, subject to change without prior notice. Photographs are for illustration purposes only & may vary from actual product. Invacare®, and Yes, you can., are trademarks of Invacare Corporation. © 2009 Invacare Corporation.



Casters, Forks, and Hardware



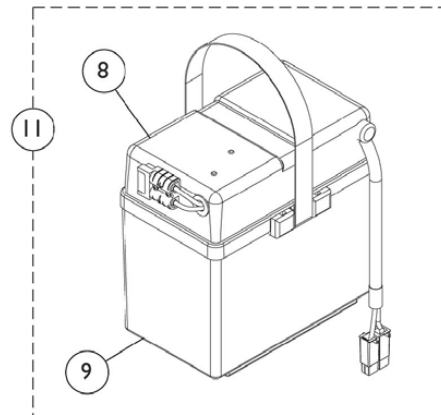
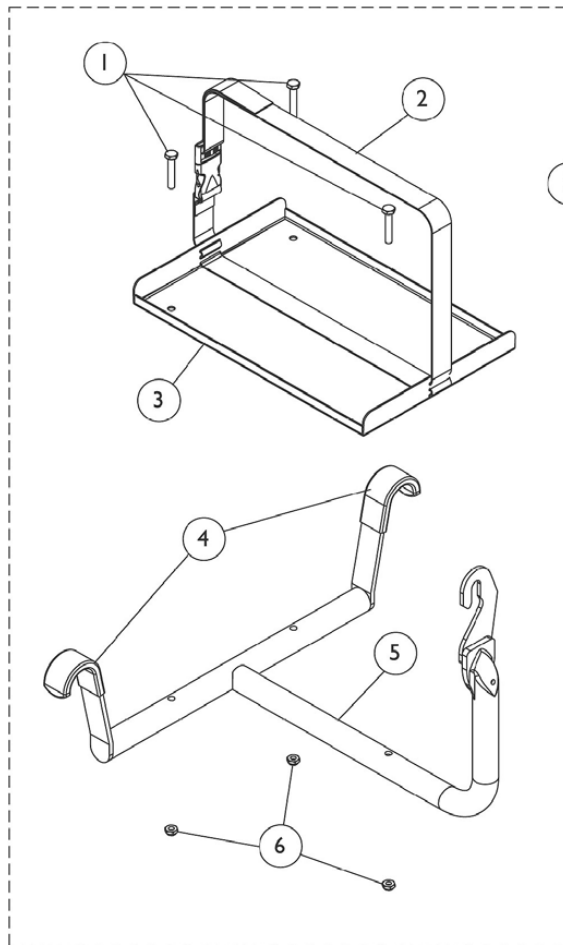
Casters, Forks, and Hardware

Item	Part Code	Description
Critical Spare Parts		
8	1070811	Wheel/Caster, Semi-Pneumatic with Bearings (8 x 1-3/4")
9	1020592	Spacer; Bearing (7/16 x 5/8 x 1-3/4")

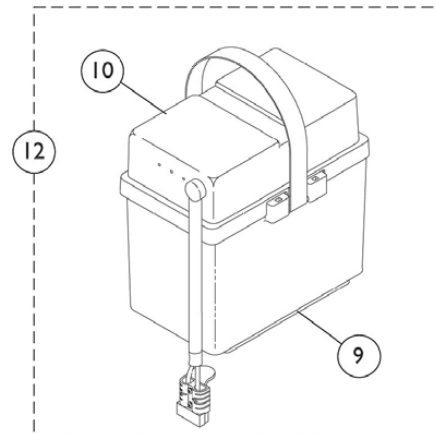
All information, including pricing and specifications, subject to change without prior notice. Photographs are for illustration purposes only & may vary from actual product. Invacare®, and Yes, you can., are trademarks of Invacare Corporation. © 2009 Invacare Corporation.



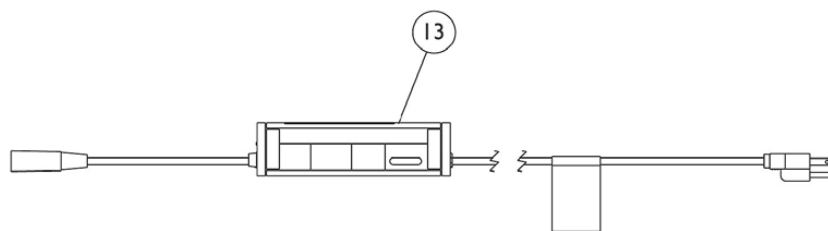
Battery Tray, Battery Boxes, and Battery Charger



Front Battery Box



Rear Battery Box



All information, including pricing and specifications, subject to change without prior notice. Photographs are for illustration purposes only & may vary from actual product. Invacare®, and Yes, you can., are trademarks of Invacare Corporation. © 2009 Invacare Corporation.



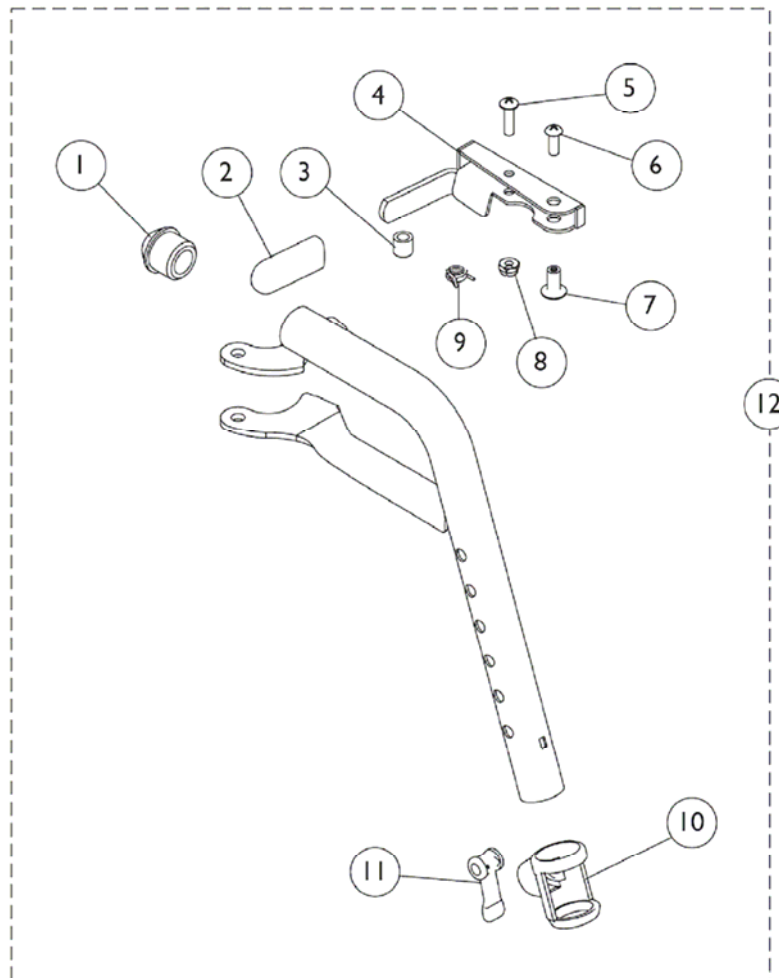
Battery Tray, Battery Boxes, and Battery Charger

Battery Tray, Battery Boxes, and Battery Charger		
Item	Part Code	Description
Critical Spare Parts		
7	1121225	Battery Tray Assembly (Includes items 1-6)
11	1115917	Battery Box Assembly, Front (22NF) (Includes items 8-9)
12	1097007	Battery Box Assembly, Rear (22NF) (Includes items 9-10)
By Order Parts		
1	1008495	Screw, Socket Button Head (1/4-20 x 1-1/2")
2	1107671	Buckle with Strap
3	1121236	Tray, Battery
4	1107153	Cover, Hanger
5	1121222	Hanger, Battery Tray
6	1025195	Locknut (1/4-20)
8	1115248	Battery Box Top, Front (22NF)
9	1057944	Battery Box Bottom with Strap
10	1097003	Battery Box Top, Rear (22NF)

All information, including pricing and specifications, subject to change without prior notice. Photographs are for illustration purposes only & may vary from actual product. Invacare®, and Yes, you can., are trademarks of Invacare Corporation. © 2009 Invacare Corporation.



Footrest Support Assembly T93H



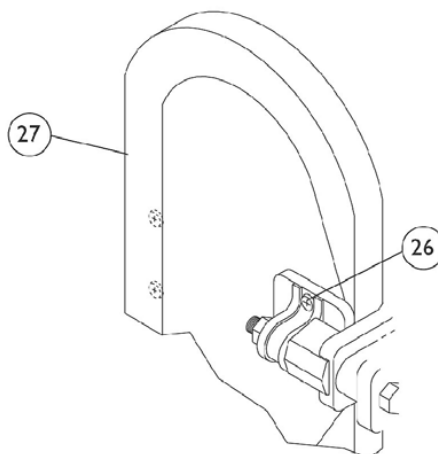
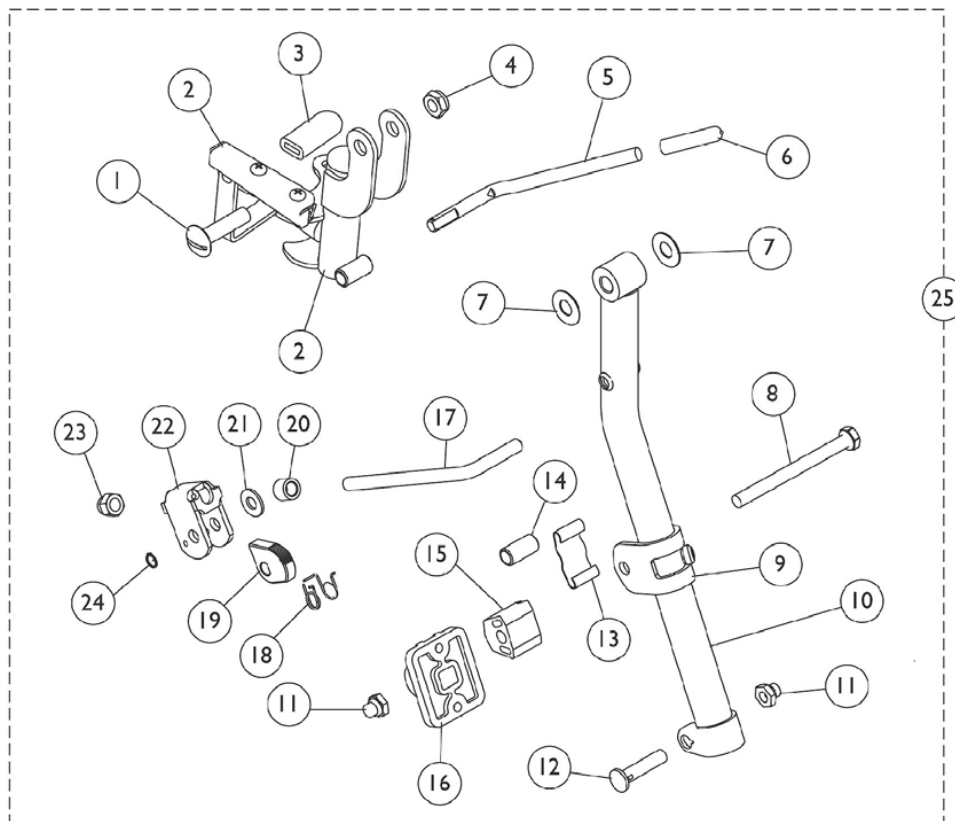
Footrest Support Assembly T93H

Item	Part Code	Description
Critical Spare Parts		
12	1118241	Support, Footrest Assembly – Right (Includes items 1-11)
12	1118242	Support, Footrest Assembly – Left (Includes items 1-11)
By Order Parts		
1	1020719	Anti-Rattle, Black
2	1006490	Tip, Plastic, Black
3	47565X057	Bushing (7/32 x 3/8 x 11/32")
4	1110178	Handle, Release - Black (Right)
4	1110179	Handle, Release - Black (Left)
5	1025716	Screw, Phillips Pan Head (#10-32 x 11/16")
6	1026114	Screw, Phillips Pan Head (#10-32 x 1/2")
7	1028846	Rivnut (#10-32)
8	1025735	Locknut (#10-32)
9	1028707	Spring, Release - Right
9	1028708	Spring, Release - Left
10	1048085	Housing, Cam
11	1048086	Lever, Cam

All information, including pricing and specifications, subject to change without prior notice. Photographs are for illustration purposes only & may vary from actual product. Invacare®, and Yes, you can., are trademarks of Invacare Corporation. © 2009 Invacare Corporation.



Legrest Support Assembly PH904A



All information, including pricing and specifications, subject to change without prior notice. Photographs are for illustration purposes only & may vary from actual product. Invacare®, and Yes, you can., are trademarks of Invacare Corporation. © 2009 Invacare Corporation.



Legrest Support Assembly PH904A

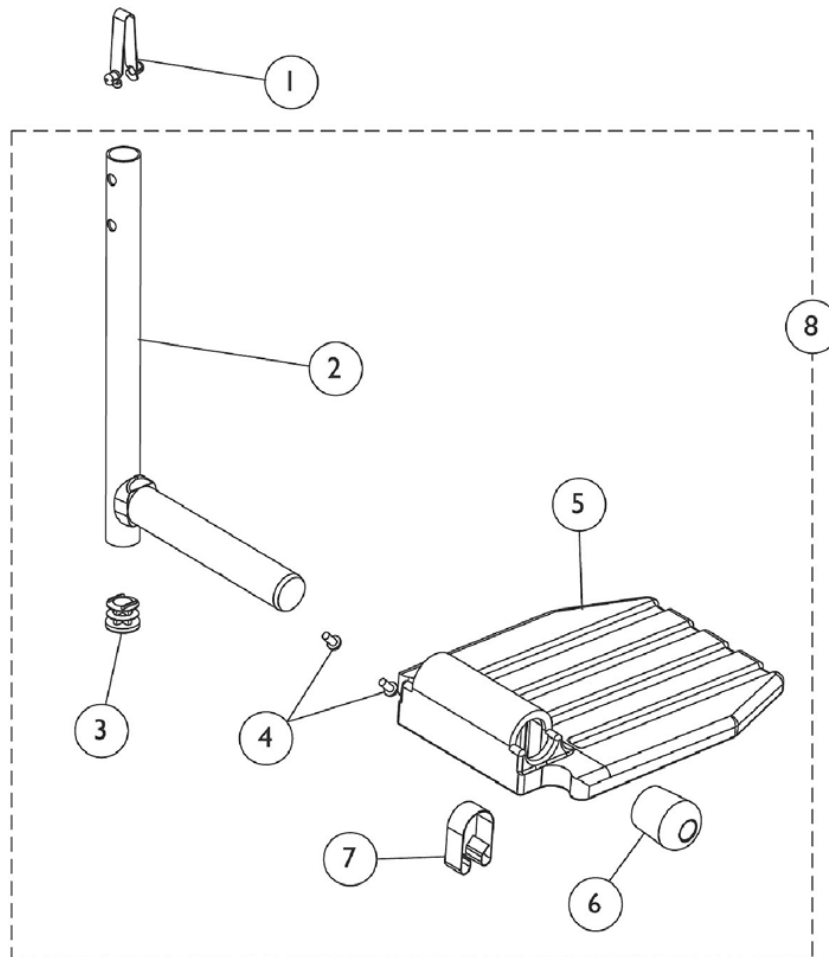
Legrest Support Assembly PH904A		
Item	Part Code	Description
Critical Spare Parts		
25	1114757	Legrest Support Assembly w/o Pad (Color) Hemi –Right (Includes items 1-24)
25	1114758	Legrest Support Assembly w/o Pad (Color) Hemi – Left (Includes items 1-24)
By Order Parts		
1	11919X000	Screw, Truss Head (3/8-16 x 1-1/2")
2	1114753	Support Bracket Assembly, Legrest (Black) - Right
2	1114754	Support Bracket Assembly, Legrest (Black) - Left
3	1006490	Tip, Plastic, Black
4	40363X000	Hex Nut (3/8"-16)
5	1037126	Handle, Release
6	1040060	Tip, Black Plastic
7	1058636	Washer, Nylon (25/64 x 7/8 x 1/32")
8	1037110	Screw, Hex Head (5/16-24 x 3-1/2")
9	1110207	Bracket, Calf Pad, Black
10	1048851	Tube, Elevating Support (Color) – Right *
10	1048852	Tube, Elevating Support (Color) – Left *
11	1107321	Nut, Low Cap (5/16"-24)
12	1026030	Screw, Lug (5/16-24 x 1-3/8")
13	48823X008	Spring
14	47328X003	Bushing, Pivot (5/16 x 7/16 x 7/8")
15	1025133	Spacer, Legrest Pad
16	04526X019	Plate, Legrest Pad
17	1113030	Bar, Ratchet
18	1037485	Spring, Release
19	1037125	Cam, Legrest
20	47328X003	Bushing, Pivot (5/16 x 7/16 x 7/8")
21	1013519	Washer, Nylon (5/16 x 11/16 x 1/16")
22	04528X002	Bracket, Release (Chrome)
23	10261X000	Acorn Nut (5/16"-24)
24	1040831	Snap Ring

* Specify 34P Flat Black Frame Finish When Ordering.

All information, including pricing and specifications, subject to change without prior notice. Photographs are for illustration purposes only & may vary from actual product. Invacare®, and Yes, you can., are trademarks of Invacare Corporation. © 2009 Invacare Corporation.



Pivot Slide Tube w Footplate - Footrest T93HA



Pivot Slide Tube w Footplate - Footrest T93HA		
Item	Part Code	Description
Critical Spare Parts		
1	1053041	Spring Button, Double
2	1111277	Pivot & Slide Tube w/ Plug Button, Footrest (Black)
3	1027097	Plug Button, Black (3/4")
5	44200X027	Footplate, Aluminum - Medium (7-3/4" W x 6" L)
6	1016346	Cap, Tube End (7/8")
7	1006981	Spring, Leaf
8	1111285	Pivot Slide Tube Assembly with Aluminum Footplate (Black) Right (Includes items 2-7)
8	1111286	Pivot Slide Tube Assembly with Aluminum Footplate (Black) Left (Includes items 2-7)
By Order Parts		
4	40120X001	Screw, Phillips Pan Head (#8-32 x 3/8")

All information, including pricing and specifications, subject to change without prior notice. Photographs are for illustration purposes only & may vary from actual product. Invacare®, and Yes, you can., are trademarks of Invacare Corporation. © 2009 Invacare Corporation.



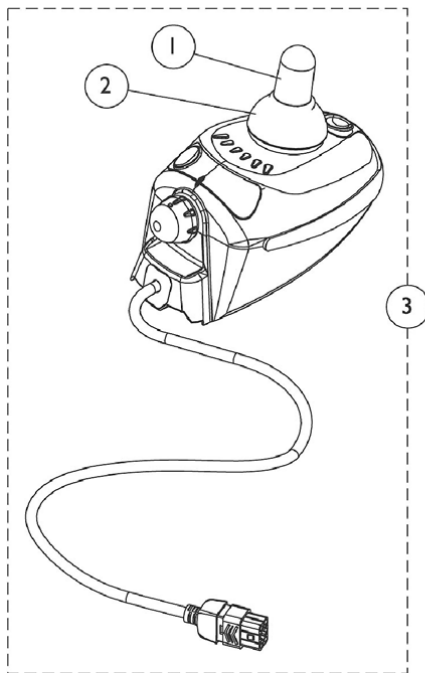
Heel Loops

Heel Loops		
Item	Part Code	Description
Critical Spare Parts		
N/A	1035929	Heel Loops (1 Pair) - Footrests and Legrests
N/A	1035926	Heel Loop Hardware (1 Pair) – Footrest *
N/A	1035907	Heel Loop Hardware (1 Pair) – Legrests *

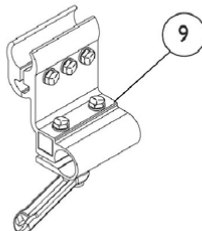
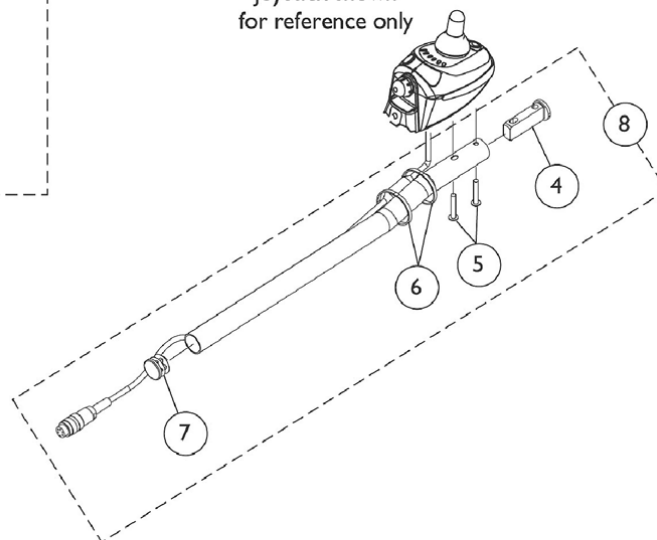
* Includes 2 ea. Spacers, Screws, and Locknuts



MK5 CSPJ Joystick



Joystick shown
for reference only

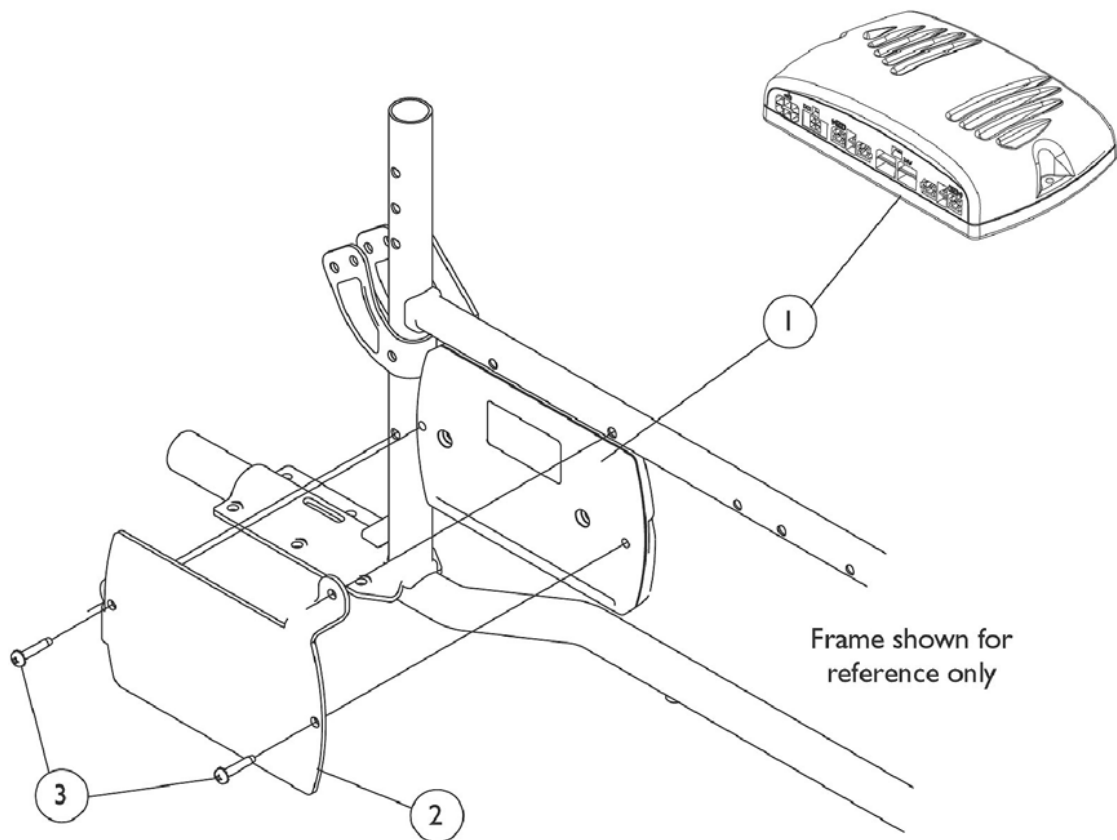


MK5 CSPJ Joystick		
Item	Part Code	Description
Critical Spare Parts		
1	1040217	Knob, Joystick
2	1040218	Skirt, Joystick
3	1121239	Joystick, MK5 CSPJ
8	1093069	Kit, 1/2" Offset Joystick Tube with Hardware (Includes items 4-7)
9	1093071	Clamp, Fixed Height Joystick Tube
By Order Parts		
4	1093063	Spacer, Joystick Tube
5	1025714	Screw, Phillips Pan Head (#10-32 x 1-1/8")
6	1095502	Package, Cable Ties (11-1/2" Long)
7	1027095	Plug Button, Black (7/8")

All information, including pricing and specifications, subject to change without prior notice. Photographs are for illustration purposes only & may vary from actual product. Invacare®, and Yes, you can., are trademarks of Invacare Corporation. © 2009 Invacare Corporation.



MK5 NX Controller

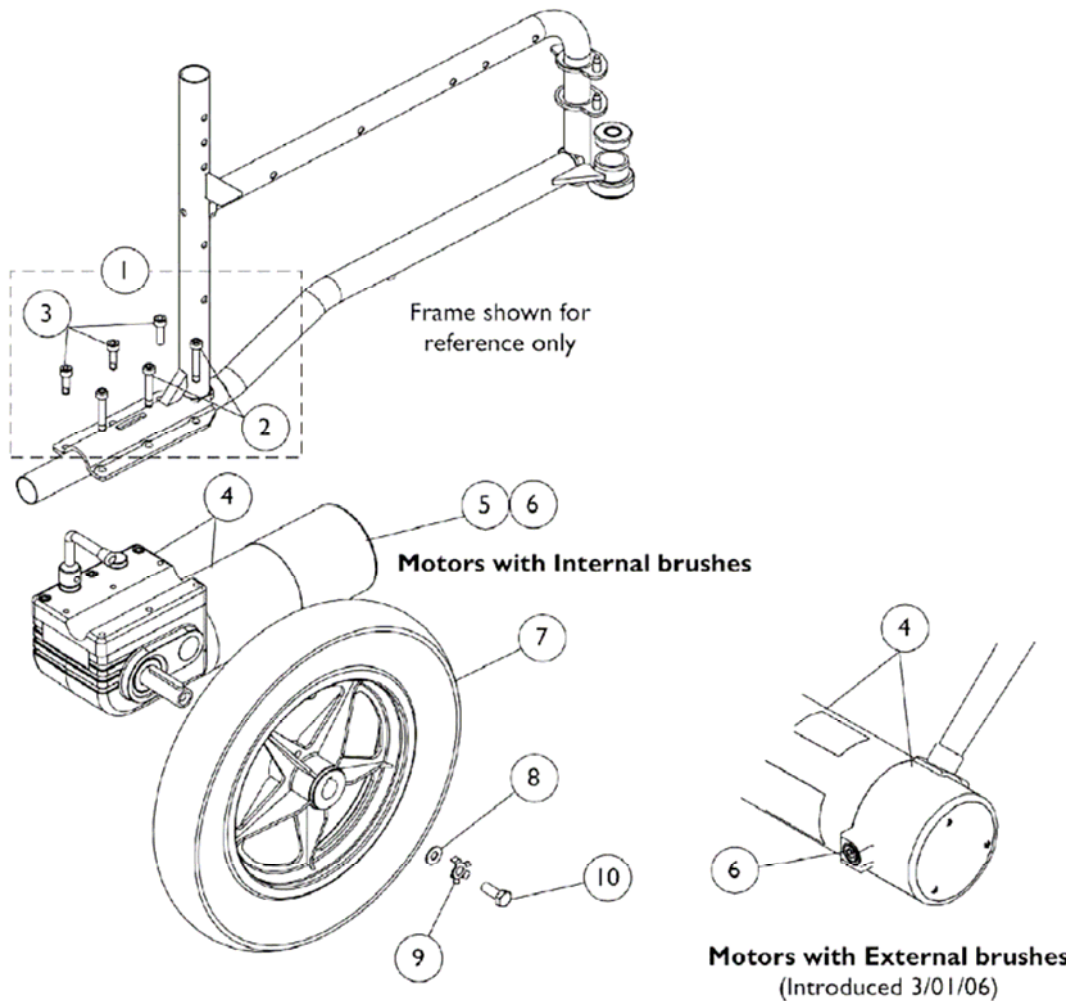


MK5 NX Controller		
Item	Part Code	Description
Critical Spare Parts		
1	1109530	Controller, MK5 NX
2	1121213	Bracket, Controller Mounting
3	1113439	Screw, Phillips Pan Head Tap (#10-32 x 1")
NOT PICTURED	GSM80200	Extension cord (Controller to Battery)

All information, including pricing and specifications, subject to change without prior notice. Photographs are for illustration purposes only & may vary from actual product. Invacare®, and Yes, you can., are trademarks of Invacare Corporation. © 2009 Invacare Corporation.



Motors, Drive Wheels, and Attaching Hardware



Motors, Drive Wheels, and Attaching Hardware		
Item	Part Code	Description
Critical Spare Parts		
1	1141284	Kit, Motor Mounting Hardware
4	1141282	Motor and Gearbox - Right
4	1141283	Motor and Gearbox - Left
6	1137265	Kit, Motor Brush w/ Cap – External (For motors with external brushes. Includes 2 ea. brushes, 2 ea. brush caps, and 1 ea. instruction sheet)
7	1064177	Wheel, Drive 5 Spoke with Foam Fill Insert (12-1/2" x 2-1/4"). (Includes Locking Tab Washer and Instruction Sheet)

All information, including pricing and specifications, subject to change without prior notice. Photographs are for illustration purposes only & may vary from actual product. Invacare®, and Yes, you can., are trademarks of Invacare Corporation. © 2009 Invacare Corporation.



Invacare® Australia

1 Lenton Place

North Rocks NSW 2151 Australia

www.invacare.com.au

email: sales@invacare.com.au

Phone 1800 460 460

Fax: (02) 8839 5311