



Invacare® Comet



Spare Parts Catalogue

All information, including pricing and specifications, subject to change without prior notice. Photographs are for illustration purposes only & may vary from actual product. Invacare®, and Yes, you can., are trademarks of Invacare Corporation. © 2009 Invacare Corporation.



CONTENTS

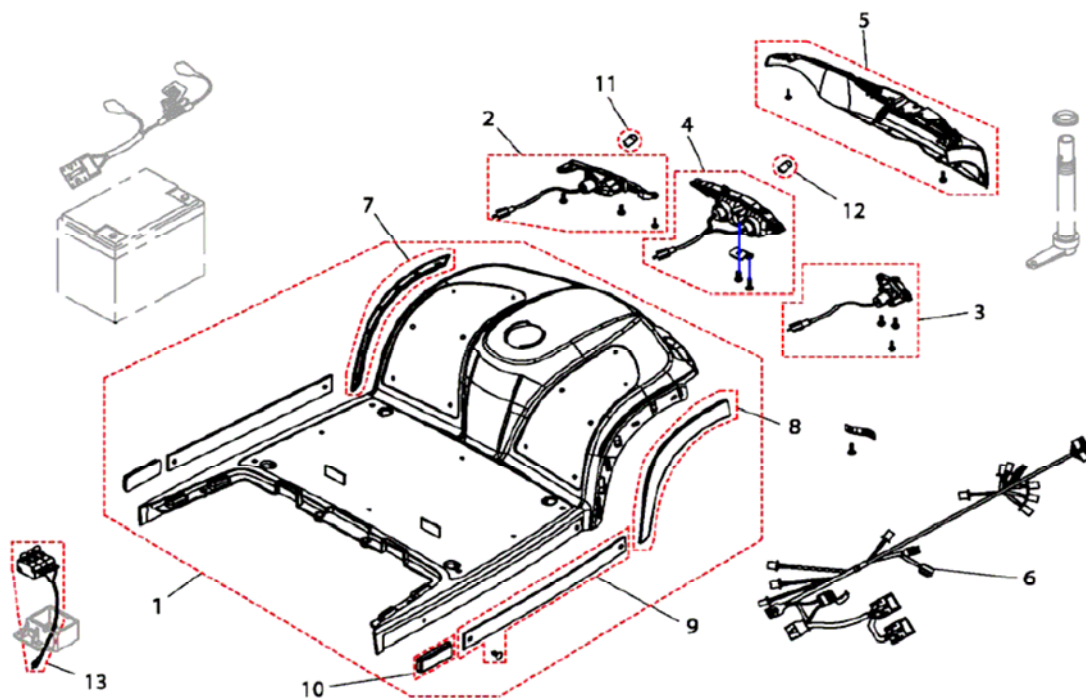
Front Shroud	3
Front frame	4
Rear Shroud	5
Rear Frame	6
Seat & Seat options	7
Front Wheel & Steering	8
Rear Wheels & Propulsion	9
Brakes	10
Steering	11
Cable & Charger	13
Options	14

For any order of spare parts for Comet models, the following information is required:

- Type of Scooter
- Serial Number
- Part Number
- Part Description



Front Shroud

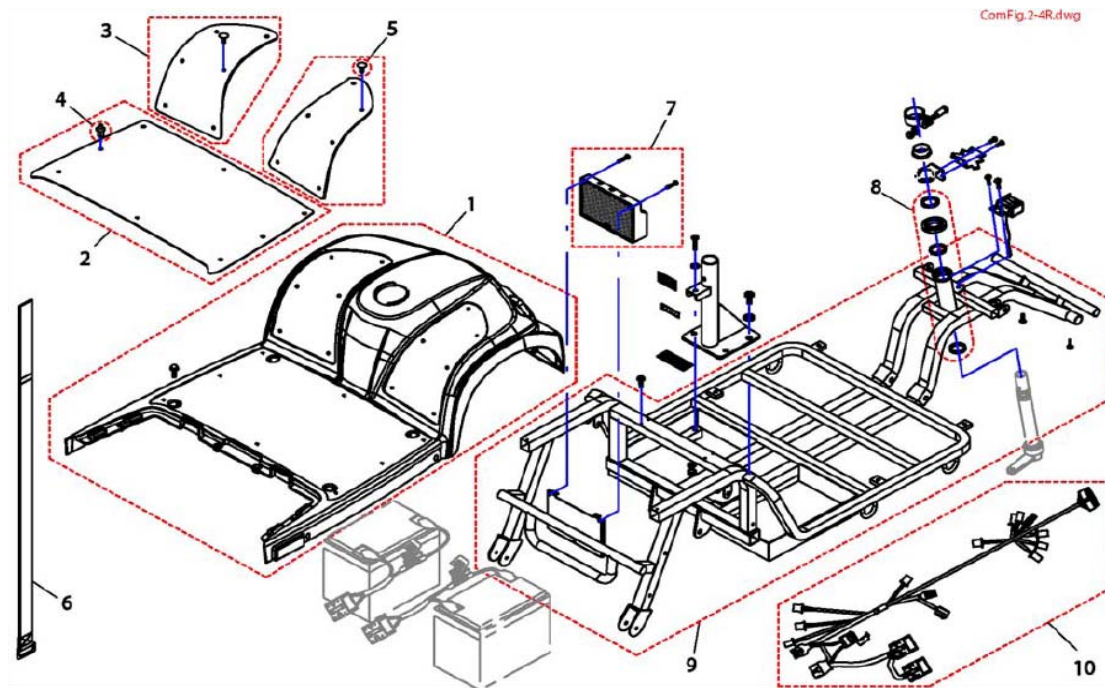


Front Shroud			
Item	Part Code	Description	Qty
1	SP1521732	Front Shroud, silver	1
1	SP1521733	Front Shroud, blue	1
2	SP1517733	Turn Signal LH	1
3	SP1517734	Turn Signal RH	1
4	SP1517878	Head Light, compl.	1
5	SP1521762	Cover Bumper Front	1
6	SP1521761	Wire Harness	1
7	SP1521735	Moulding LH	1
8	SP1521734	Moulding RH	1
9	SP1521754	Moulding	1
10	SP1517331	Reflector	1
11	SP1522030	Bulb Turn Signal 24V/10W	1
12	SP1522029	Bulb Head Light 24V/21W	1
13	SP1522027	Speed Limit Switch 15km/h	1

All information, including pricing and specifications, subject to change without prior notice. Photographs are for illustration purposes only & may vary from actual product. Invacare®, and Yes, you can., are trademarks of Invacare Corporation. © 2009 Invacare Corporation.



Front frame



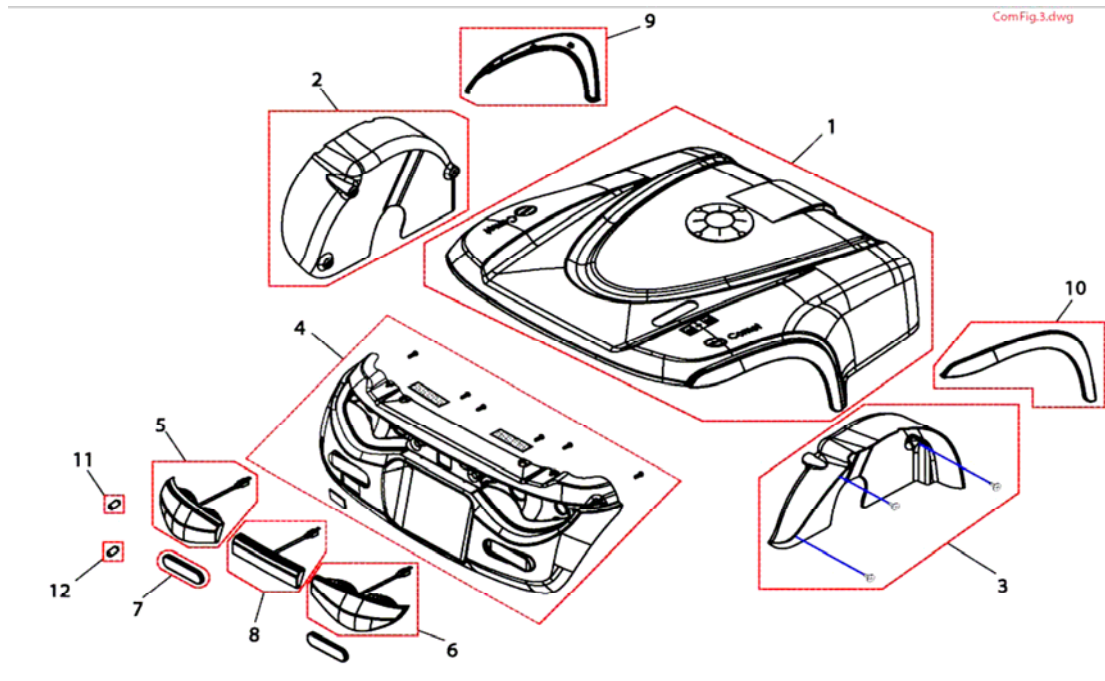
Front frame

Item	Part Code	Description	Qty
1	SP1521732	Front Shroud, silver	1
1	SP1521733	Front Shroud, blue	1
2	SP1521755	Pad, Leg Shield	1
3	SP1521756	Pad Front RH & LH	1
4	SP1505476	Rivet (8 pieces)	1
5	SP1505479	Tree Rivet (6 Pieces)	1
6	SP1521758	Battery strap	1
7	SP1517317	Controller Rhino 110A	1
8	SP1505487	Bearing	1
9	SP1521760	Front frame	1
10	SP1521761	Main wire	1

All information, including pricing and specifications, subject to change without prior notice. Photographs are for illustration purposes only & may vary from actual product. Invacare®, and Yes, you can., are trademarks of Invacare Corporation. © 2009 Invacare Corporation.



Rear Shroud

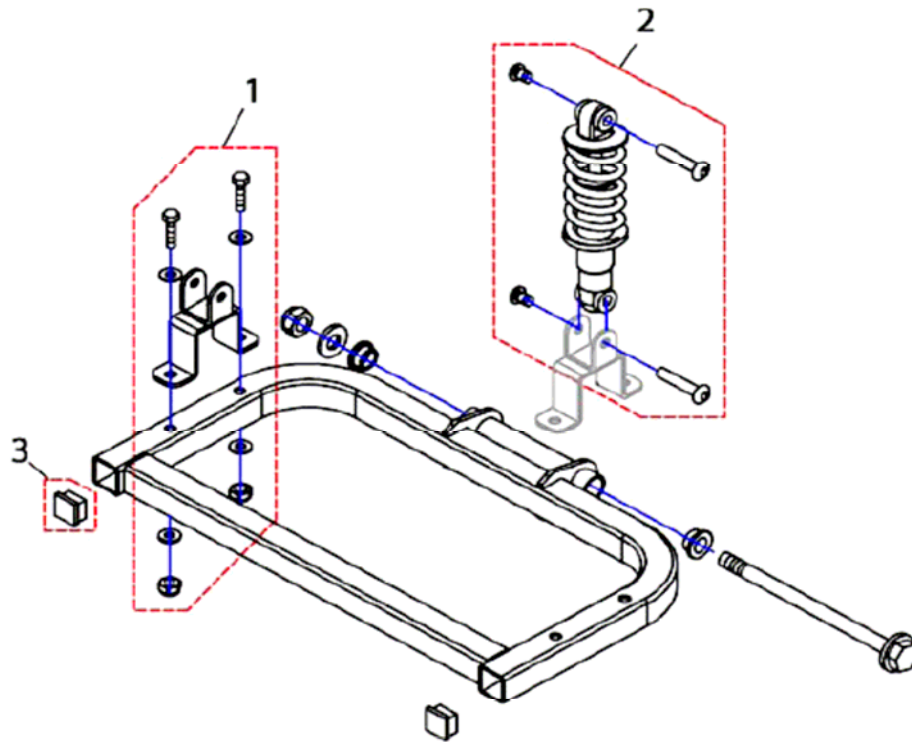


Rear Shroud			
Item	Part Code	Description	Qty
1	SP1521837	Rear Shroud, silver	1
1	SP1521838	Rear Shroud, blue	1
2	SP1521862	Fender LH	1
3	SP1521839	Fender RH	1
4	SP1521683	Cover Bumper Rear	1
5	SP1518034	Turn Signal Rear LH	1
6	SP1518033	Turn Signal Rear RH	1
7	SP1521881	Reflector-R, E-Mark	1
8	SP1518035	Neon Light, compl.	1
9	SP1521882	Rear Cover, LH	1
10	SP1521883	Rear Cover, RH	1
11	SP1522030	Bulb, turn signal 24V/ 10W	
12	SP1522034	Bulb, rear light 24V/ 5W	

All information, including pricing and specifications, subject to change without prior notice. Photographs are for illustration purposes only & may vary from actual product. Invacare®, and Yes, you can., are trademarks of Invacare Corporation. © 2009 Invacare Corporation.



Rear Frame

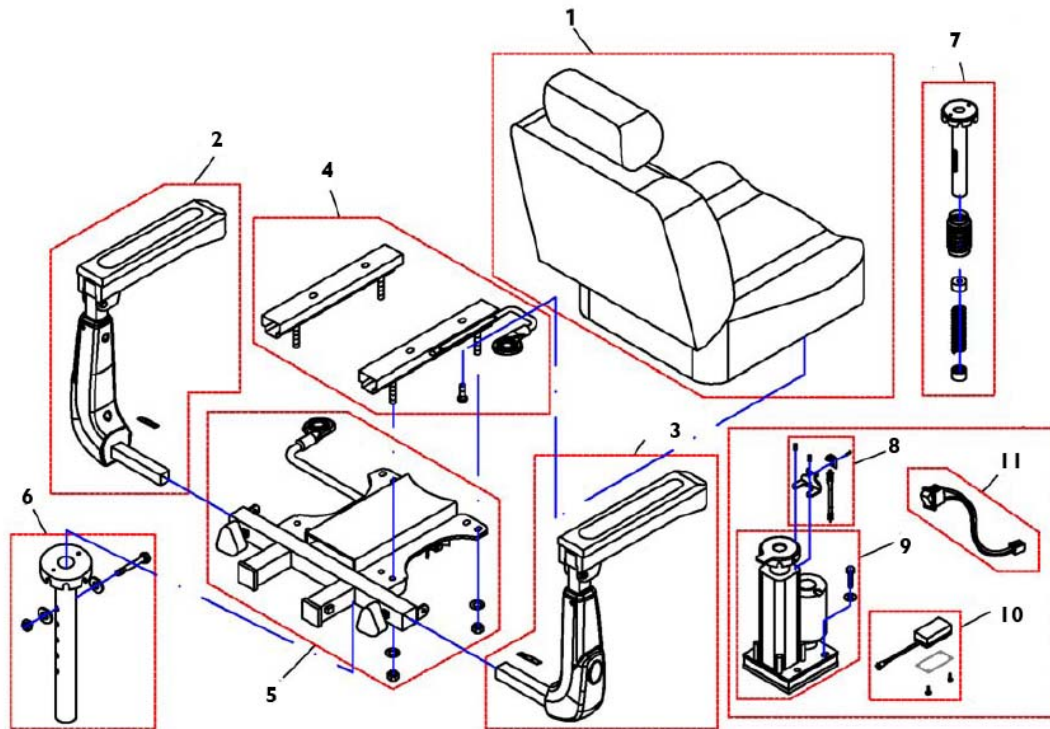


Rear Frame			
Item	Part Code	Description	Qty
1	SP1521888	Holder Differential	1
2	SP1521886	Shock Absorber	1
3	SP1521597	Plug, Cane Bracket	1

All information, including pricing and specifications, subject to change without prior notice. Photographs are for illustration purposes only & may vary from actual product. Invacare®, and Yes, you can., are trademarks of Invacare Corporation. © 2009 Invacare Corporation.



Seat & Seat options

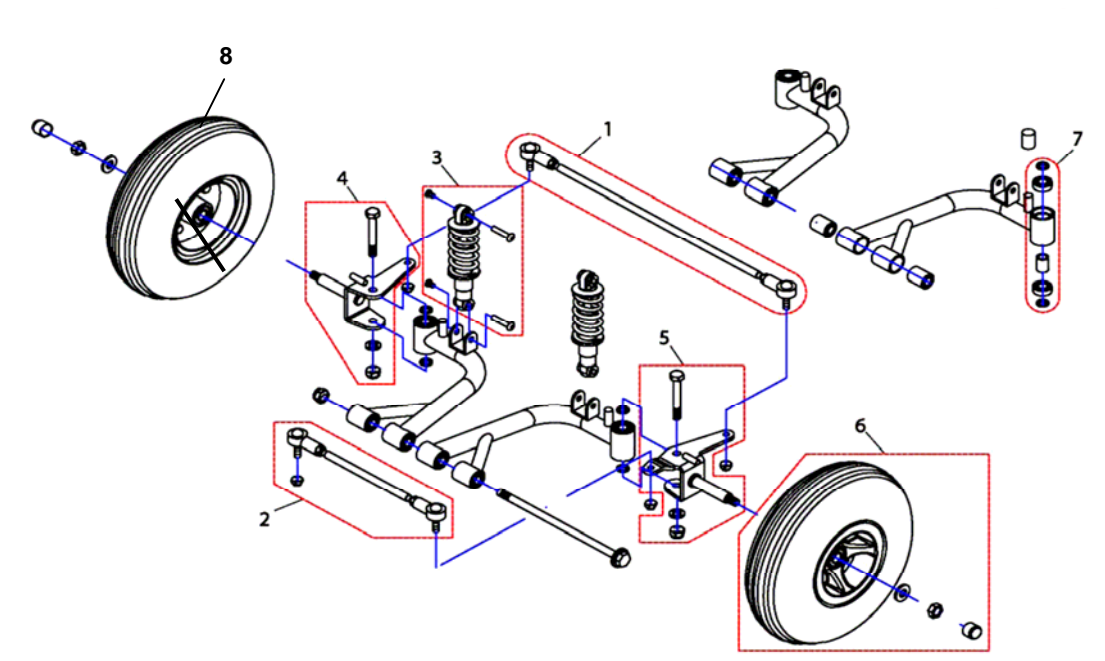


Seat & Seat options			
Item	Part Code	Description	Qty
1	SP1521890	Standard Seat	1
2	SP1521689	Armrest LH	1
3	SP1521688	Armrest RH	1
4	SP1521690	Slide Assembly	1
5	SP1505533	Seat Bracket Assembly	1
6	SP1521691	Seatbracket Standard	1
7	SP1521624	Shock Absorber Seat - Discontinued	1
8	SP1521985	Seatswitch with Holder - Discontinued	1
9	SP1521979	Seatlifter	1
10	SP1521986	Controller Seatlifter	1
11	SP1522037	Switch Seatlifter	1

All information, including pricing and specifications, subject to change without prior notice. Photographs are for illustration purposes only & may vary from actual product. Invacare®, and Yes, you can., are trademarks of Invacare Corporation. © 2009 Invacare Corporation.



Front Wheels

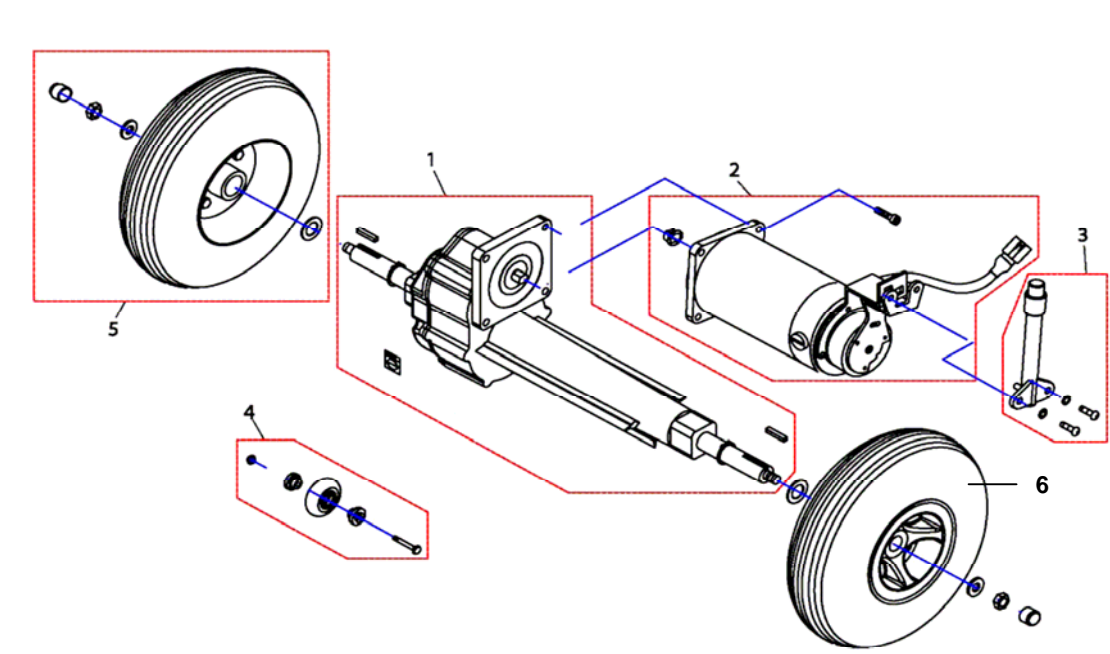


Front Wheel & Steering			
Item	Part Code	Description	Qty
1	SP1518077	Front Rod Assembly	1
2	SP1521994	Track Rod, short	1
3	SP1521995	Shock Absorber front	1
4	SP1521996	Front Axle LH	1
5	SP1521997	Front Axle RH	1
6	SP1521999	Front Wheel Assembly	1
7	SP1522000	Bearing Kit	1
8	1527711	Tyre	1
Not Pictured	1527714	Inner Tube	1

All information, including pricing and specifications, subject to change without prior notice. Photographs are for illustration purposes only & may vary from actual product. Invacare®, and Yes, you can., are trademarks of Invacare Corporation. © 2009 Invacare Corporation.



Rear Wheels & Propulsion

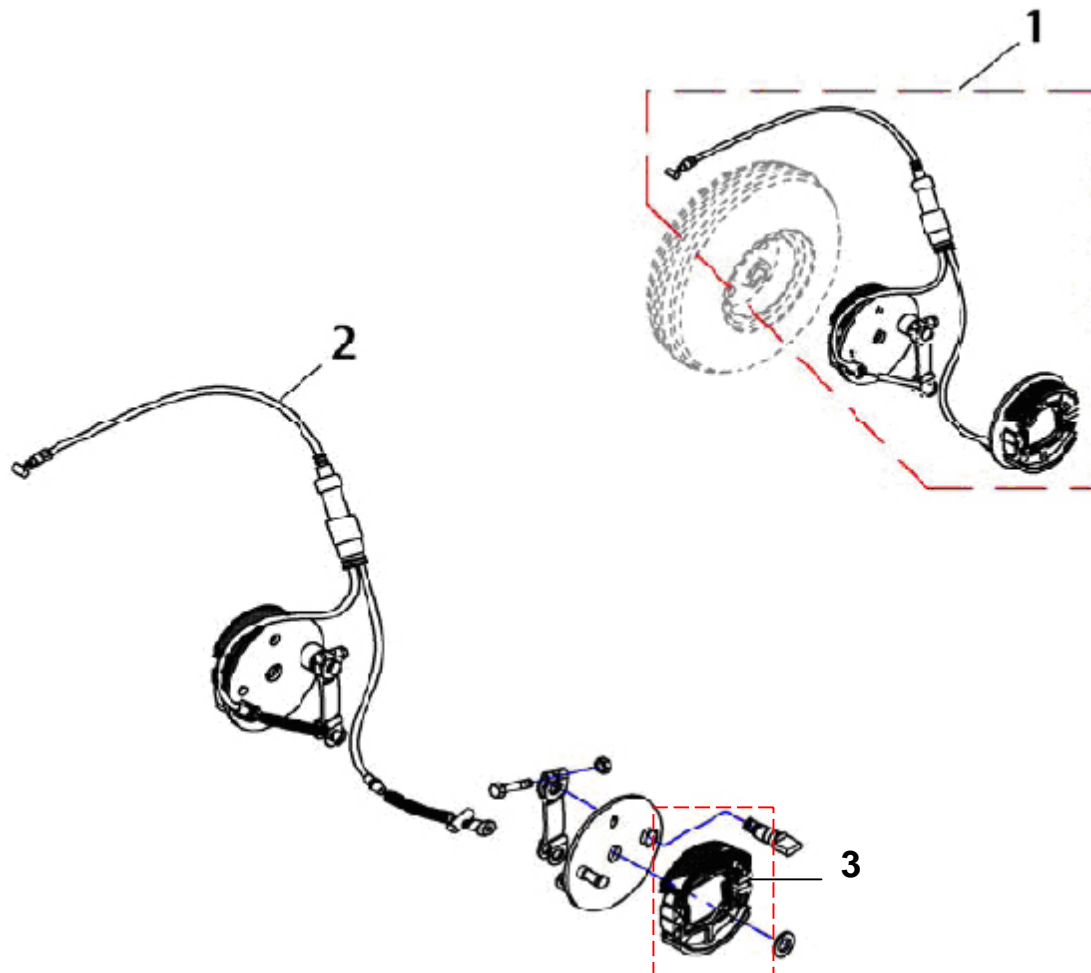


Rear Wheels & Propulsion			
Item	Part Code	Description	Qty
1	SP1522013	Differential 15 km/h	1
2	SP1522017	Motor 15 km/h	1
3	SP1505672	Lever	1
4	SP1522021	Wheel, Anti-Tipper	1
5	SP1522020	Rear Wheel Assembly	1
6	1527711	Tyre	1
Not Pictured	1527714	Inner Tube	1

All information, including pricing and specifications, subject to change without prior notice. Photographs are for illustration purposes only & may vary from actual product. Invacare®, and Yes, you can., are trademarks of Invacare Corporation. © 2009 Invacare Corporation.



Brakes

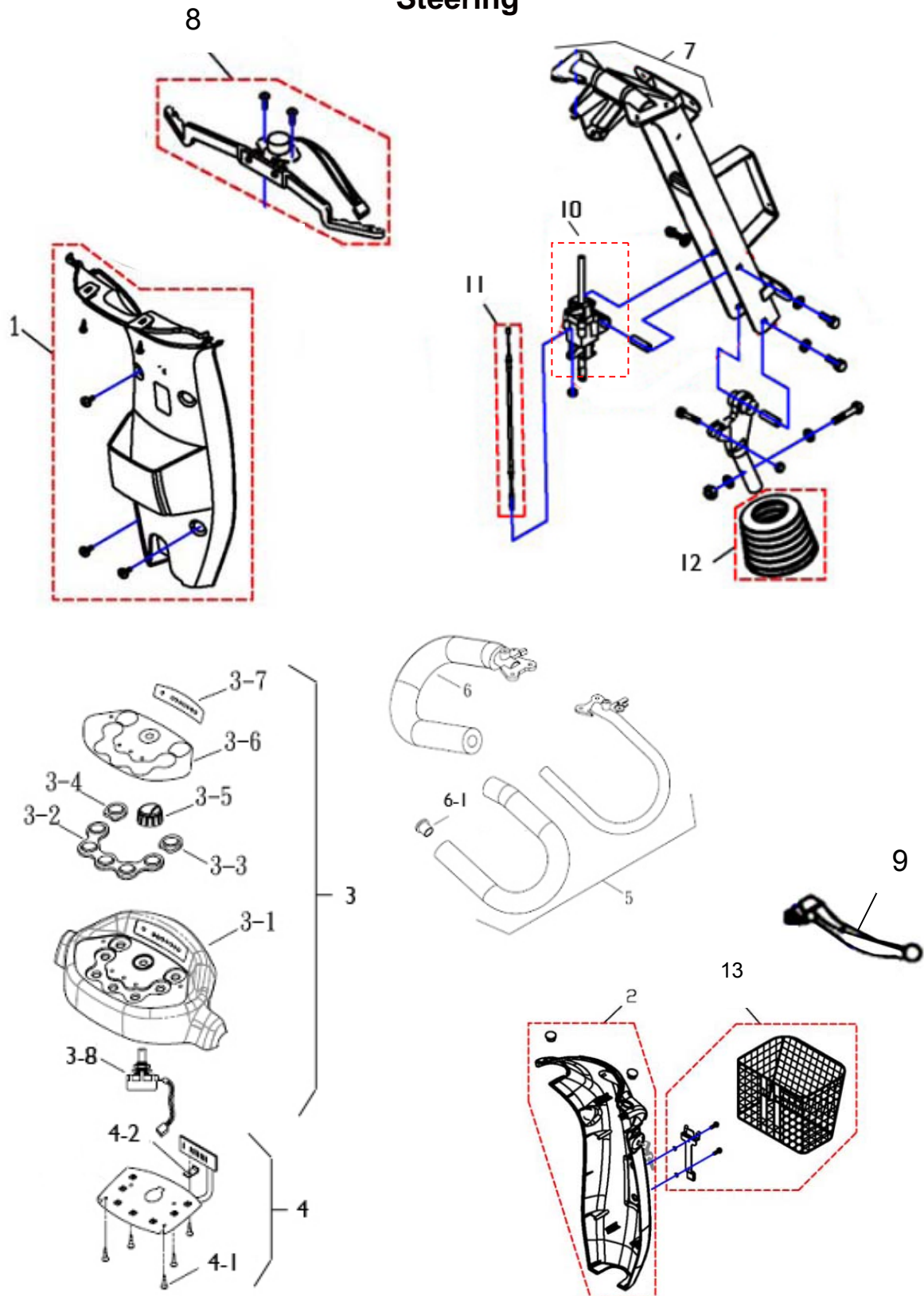


Brakes			
Item	Part Code	Description	Qty
1	365000-68600	Brake Assembly	1
2	SP1518422	Break Cable	1
3	1518418	Shoe Comp Brake	1

All information, including pricing and specifications, subject to change without prior notice. Photographs are for illustration purposes only & may vary from actual product. Invacare®, and Yes, you can., are trademarks of Invacare Corporation. © 2009 Invacare Corporation.



Steering



All information, including pricing and specifications, subject to change without prior notice. Photographs are for illustration purposes only & may vary from actual product. Invacare®, and Yes, you can., are trademarks of Invacare Corporation. © 2009 Invacare Corporation.

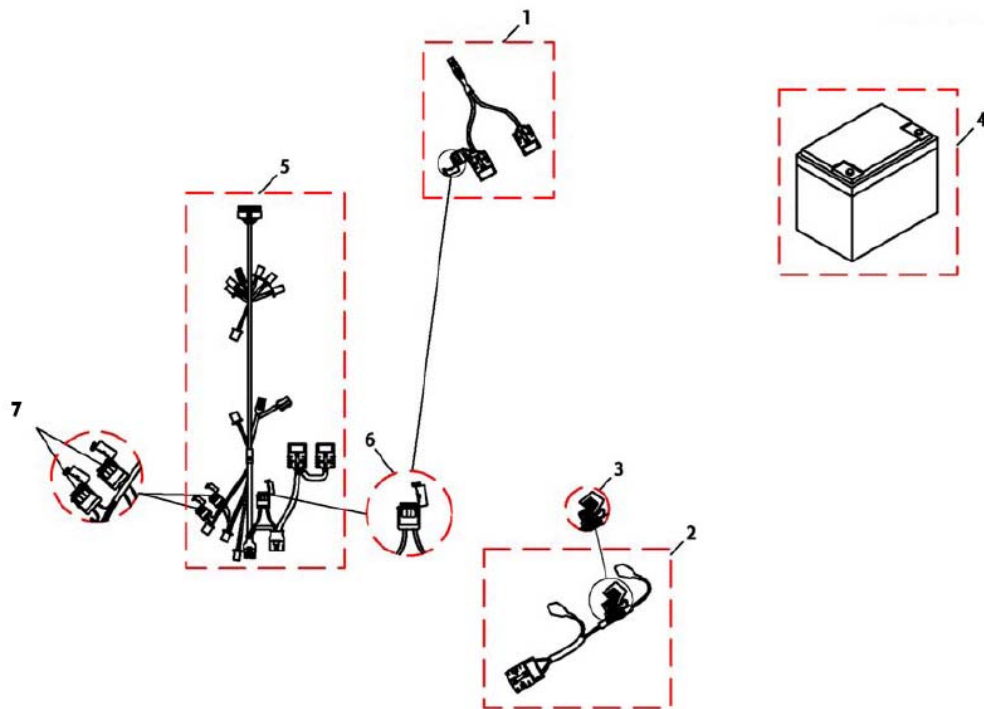


Steering			
Item	Part Code	Description	Qty
1	SP1521725	Back Cover, Tiller (Black)	1
2	SP151726	Front Cover Tiller (Silver)	1
2	SP1521727	Front Cover Tiller (Blue)	1
3	SP1526435	Cover, steering upper assembly (excludes PC Board)	1
3-1	1526430	Cover, steering upper	1
3-2	1505459	Rubber Buttons (group of 5)	1
3-3	1526431	Rubber Buttons (speed reduction)	1
3-4	1526432	Rubber Buttons (inactive)	1
3-5	1505460	Knob, speed control	1
3-6	1526433	Sticker, cap	1
3-7	1526434	Sticker, Battery Light	1
3-8	1505462	Variable Resistor Complete 30.0K Ω	1
4	SP1527395	PC Board	1
4-1	503203-00801	Screw (5 included)	1
4-2	517307-62800	PC Board Plate	1
5	1527828	Delta Handlebar LH	1
5	1527827	Delta Handlebar RH	1
6	1527790	Grip, Handlebar	1
6-1	1485005	Plug, Handlebar	1
7	521100-62800	Steering Frame Complete	1
8	SP1521575	Wig Wag	1
9	SP1521578	Lever RH and LH	Pair
10	SP1505279	Steering Adjustment Assembly	1
11	SP1521583	Cable	1
12	SP1521586	Cover, Steering Joint	1
13	SP1521584	Basket, Front	1

All information, including pricing and specifications, subject to change without prior notice. Photographs are for illustration purposes only & may vary from actual product. Invacare®, and Yes, you can., are trademarks of Invacare Corporation. © 2009 Invacare Corporation.



Charging Cables & Batteries

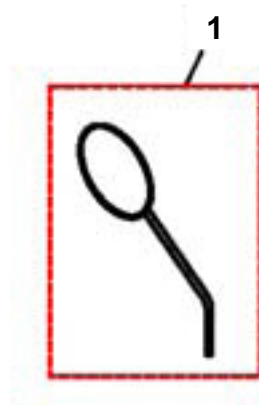


Charging Cables & Batteries			
Item	Part Code	Description	Qty
1	SP1521644	Off-Board Charging Kit	1
2	SP1521696	Wire, Battery Output	1
3	SP1505500	FUSE (70Amp)	1
4	SP1522026	Battery 12V/75Ah	1
5	SP1521761	Wire, Harness	1
6	SP1521577	Fuse 10Amp	1
7	SP1522028	Fuse 3 Amp	1

All information, including pricing and specifications, subject to change without prior notice. Photographs are for illustration purposes only & may vary from actual product. Invacare®, and Yes, you can., are trademarks of Invacare Corporation. © 2009 Invacare Corporation.



Options



Accessories

Item	Part Code	Description	Qty
1	SP1518241	Rear Mirror	1

All information, including pricing and specifications, subject to change without prior notice. Photographs are for illustration purposes only & may vary from actual product. Invacare®, and Yes, you can., are trademarks of Invacare Corporation. © 2009 Invacare Corporation.



Invacare Australia

PO Box 5002
1 Lenton Place
North Rocks NSW 2151 Australia.
email: sales@invacare.com.au
Phone 1800 460 460
Fax: (02) 8839 5311
www.invacare.com.au

Invacare New Zealand

PO Box 62-124
4 Westfield Place
Mt Wellington, Auckland,
New Zealand
Freephone 0508 468 222
Freefax 0508 807 788
www.invacare.co.nz