



# Invacare® Pegasus



## Spare Parts Catalogue

All information, including pricing and specifications, subject to change without prior notice. Photographs are for illustration purposes only & may vary from actual product. Invacare®, and Yes, you can., are trademarks of Invacare Corporation. © 2009 Invacare Corporation.



# CONTENTS

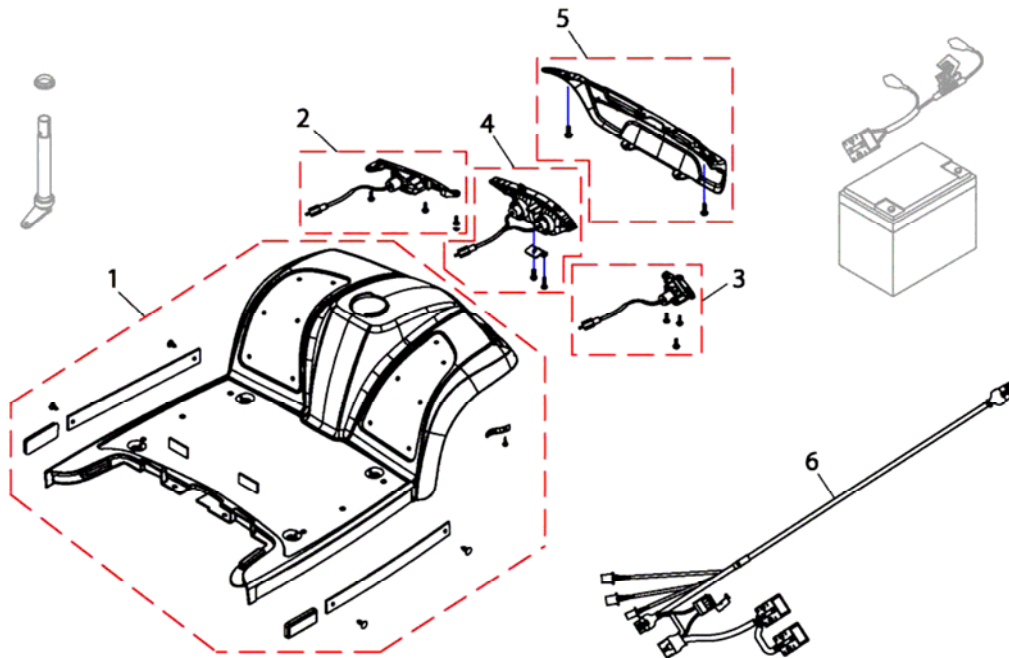
<b>Front Shroud</b>	<b>3</b>
<b>Front frame</b>	<b>4</b>
<b>Rear Shroud</b>	<b>5</b>
<b>Rear Frame</b>	<b>6</b>
<b>Seat &amp; Seat options</b>	<b>7</b>
<b>Front Wheel &amp; Steering</b>	<b>8</b>
<b>Rear Wheels &amp; Propulsion</b>	<b>9</b>
<b>Brakes</b>	<b>10</b>
<b>Steering</b>	<b>11</b>
<b>Cable &amp; Charger</b>	<b>13</b>
<b>Options</b>	<b>14</b>

For any order of spare parts for Pegasus models, the following information is required:

- Type of Scooter
- Serial Number
- Part Number
- Part Description



## Front Shroud

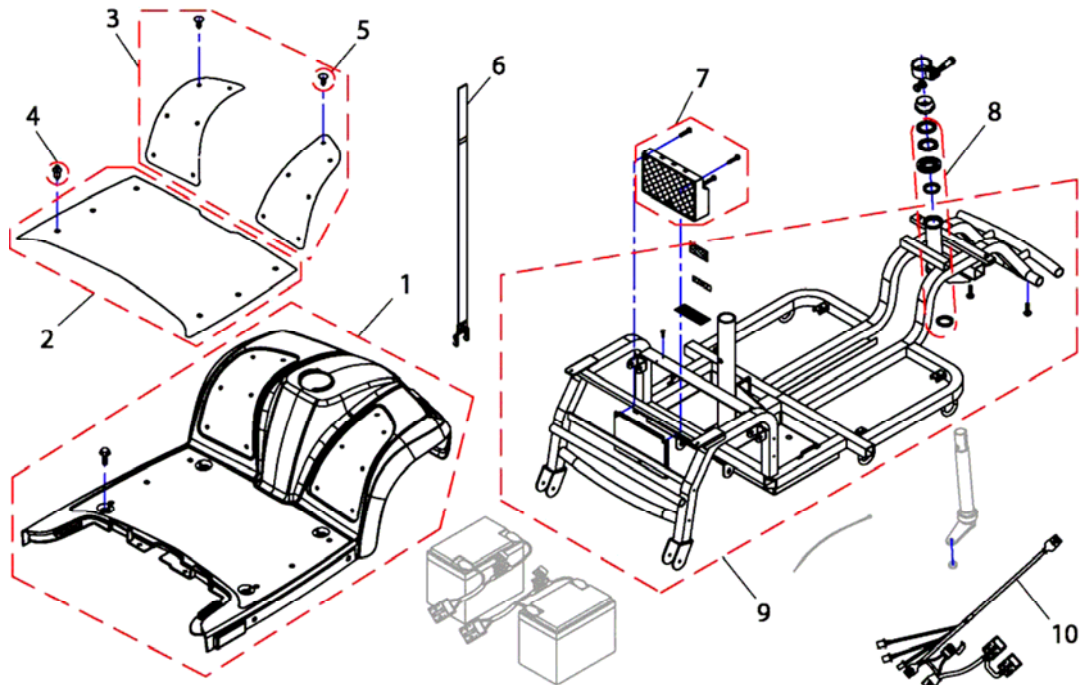


Front Shroud			
Item	Part Code	Description	Qty
1	SP1517290	Front Shroud 4 Wheeler, silver	1
1	SP1521654	Front Shroud 4 Wheeler, blue	1
2	SP1517733	Turn Signal LH	1
3	SP1517734	Turn Signal RH	1
4	SP1517878	Head Light, cmpl.	1
5	SP1517881	Cover Bumper Front	1
6	SP1517350	Wire Harness, Rear Section	1
Not Pictured	SP1522030	Bulb, turn signal 24V/ 10W	1
Not Pictured	SP1522029	Bulb, head light 24V/ 21W	1

All information, including pricing and specifications, subject to change without prior notice. Photographs are for illustration purposes only & may vary from actual product. Invacare®, and Yes, you can., are trademarks of Invacare Corporation. © 2009 Invacare Corporation.



## Front frame

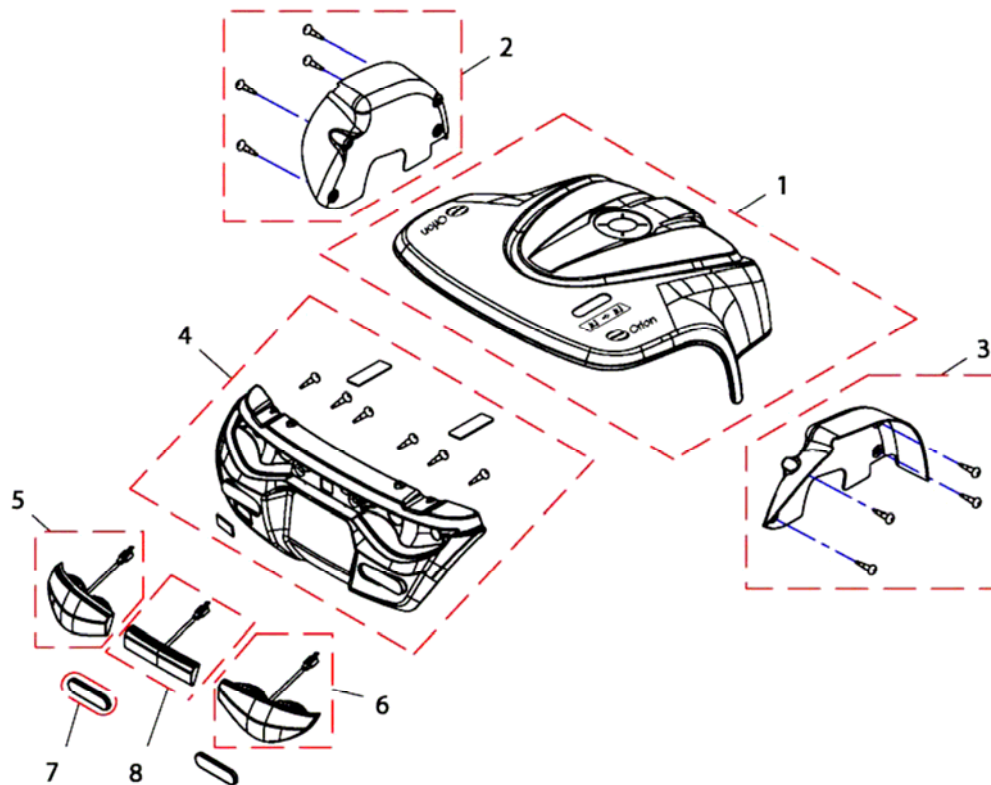


Front frame			
Item	Part Code	Description	Qty
1	SP1517290	Front Shroud 4 Wheeler, silver	1
1	SP1521654	Front Shroud 4 Wheeler, blue	1
2	SP1517291	Pad, Leg Shield	1
3	SP1517292	Pad Front RH and LH	1
4	SP1505476	Rivet, 8 Pieces	1
5	SP1505479	Tree Rivet (6 Pieces)	1
6	SP1505482	Battery Strap	1
7	SP1517317	Controller Rhino 110A	1
8	SP1505487	Bearing	1
9	SP1517348	Front Frame	1
10	SP1527399	Main Wire	1

All information, including pricing and specifications, subject to change without prior notice. Photographs are for illustration purposes only & may vary from actual product. Invacare®, and Yes, you can., are trademarks of Invacare Corporation. © 2009 Invacare Corporation.



## Rear Shroud

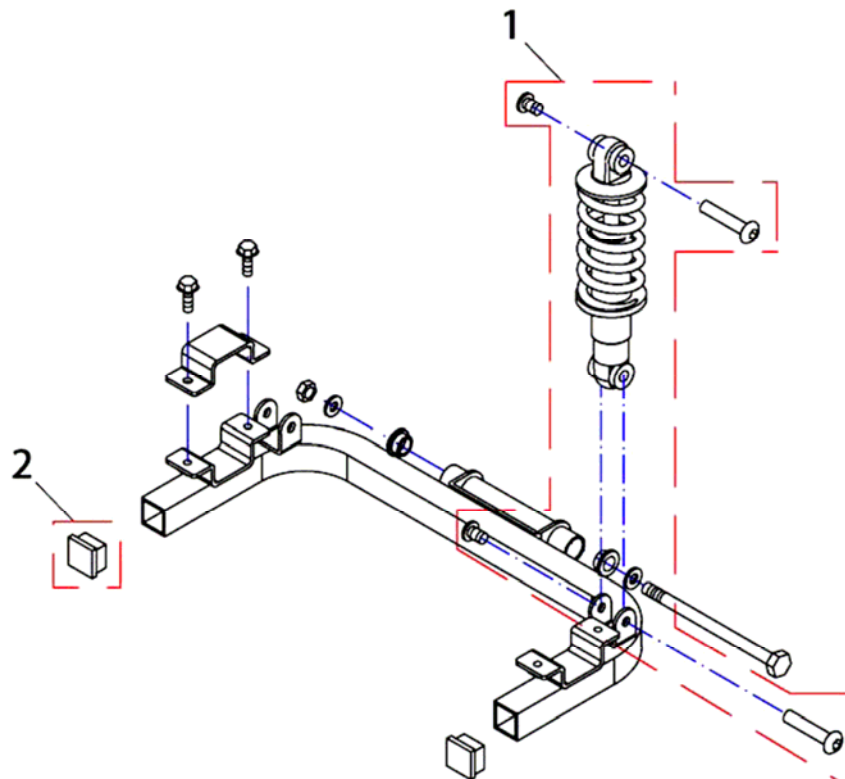


Rear Shroud			
Item	Part Code	Description	Qty
1	SP1518031	Rear Shroud cmpl., silver	1
1	SP1521658	Rear Shroud cmpl., blue	1
2	SP1518030	Fender LH	1
3	SP1518029	Fender RH	1
4	SP1518032	Cover Bumper Rear	1
5	SP1518034	Turn Signal Rear LH	1
6	SP1518033	Turn Signal Rear RH	1
7	SP1518036	Reflector-R, E-Mark	1
8	SP1518035	Neon Light, cmpl.	1
Not Pictured	SP1522030	Bulb, turn signal 24V/ 10W	1
Not Pictured	SP1522034	Bulb, rear light 24V/ 5W	1

All information, including pricing and specifications, subject to change without prior notice. Photographs are for illustration purposes only & may vary from actual product. Invacare®, and Yes, you can., are trademarks of Invacare Corporation. © 2009 Invacare Corporation.



## Rear Frame

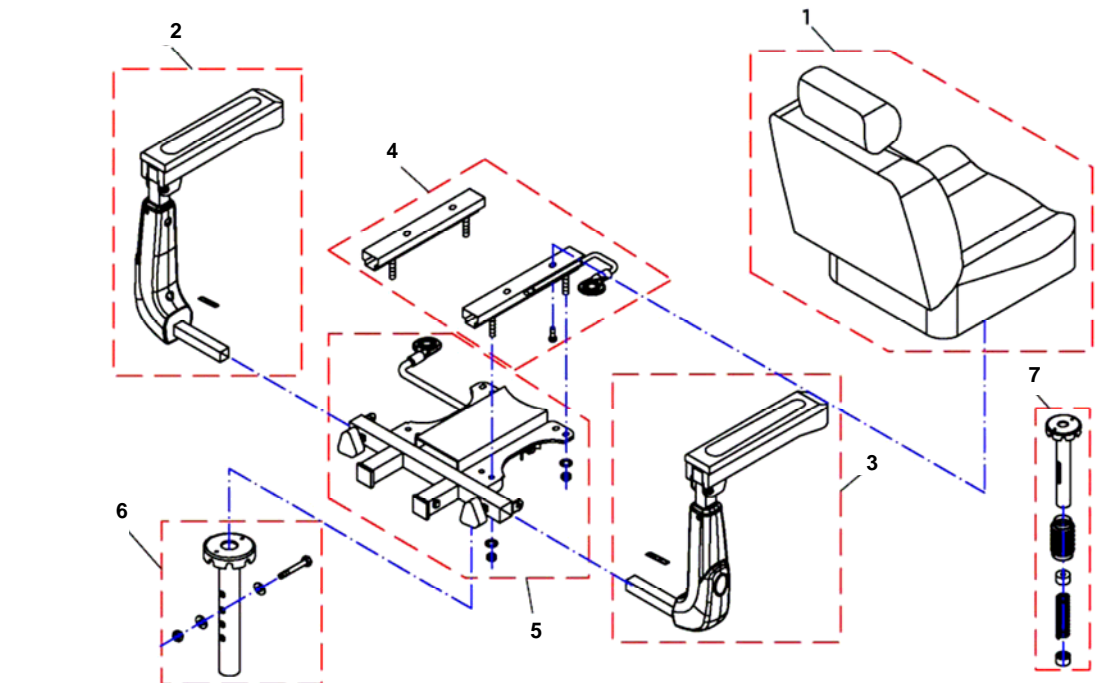


Rear Frame			
Item	Part Code	Description	Qty
1	SP1521600	Shock Absorber	1
2	SP1521597	Plug, Cane Bracket	1

All information, including pricing and specifications, subject to change without prior notice. Photographs are for illustration purposes only & may vary from actual product. Invacare®, and Yes, you can., are trademarks of Invacare Corporation. © 2009 Invacare Corporation.



## Seat & Seat options

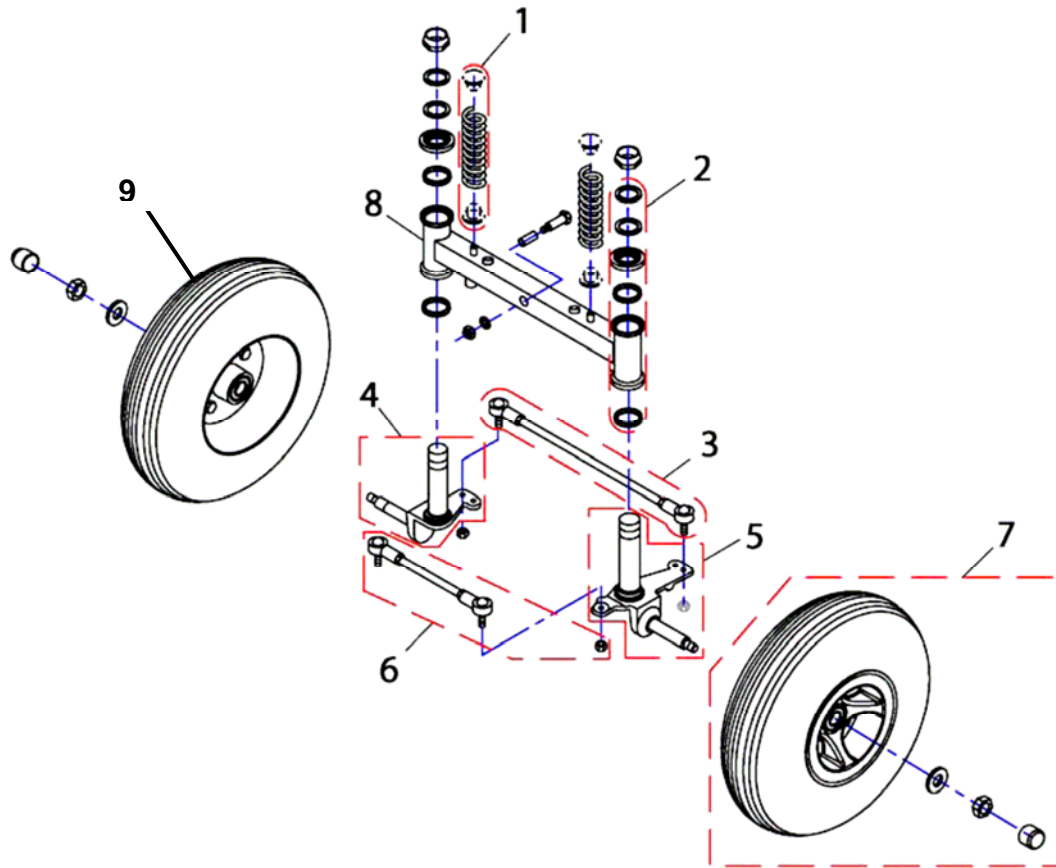


Seat & Seat options			
Item	Part Code	Description	Qty
1	SP1521687	Standard Seat	1
2	SP1521689	Armrest LH	1
3	SP1521688	Armrest RH	1
4	SP1521690	Slide Assembly	1
5	SP1505533	Seat Bracket Assembly	1
6	SP1521691	Seat bracket Standard	1
7	SP1521624	Shock Absorber Seat	1

All information, including pricing and specifications, subject to change without prior notice. Photographs are for illustration purposes only & may vary from actual product. Invacare®, and Yes, you can., are trademarks of Invacare Corporation. © 2009 Invacare Corporation.



## Front Wheel & Steering



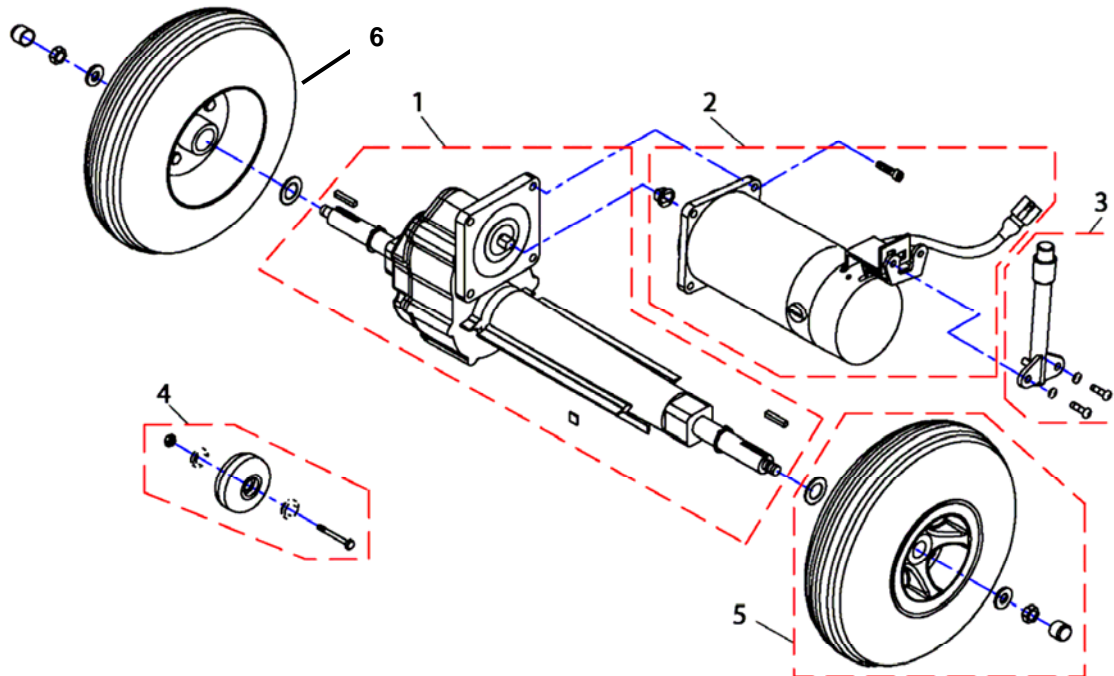
Front Wheel & Steering			
Item	Part Code	Description	Qty
1	SP1518196	Spring, Front Wheel	1
2	SP1505487	Bearing	1
3	SP1518077	Front Rod Assembly	1
4	SP1518237	Front Axle LH	1
5	SP1518238	Front Axle RH	1
6	SP1518078	Rear Rod Assembly	1
7	SP1518333	Front Wheel Assembly	1
8	1518076	Swing Assembly	1
9	1527605	Tyre	1
Not Pictured	1527606	Inner Tube	1

All information, including pricing and specifications, subject to change without prior notice. Photographs are for illustration purposes only & may vary from actual product. Invacare®, and Yes, you can., are trademarks of Invacare Corporation. © 2009 Invacare Corporation.





## Rear Wheels & Propulsion

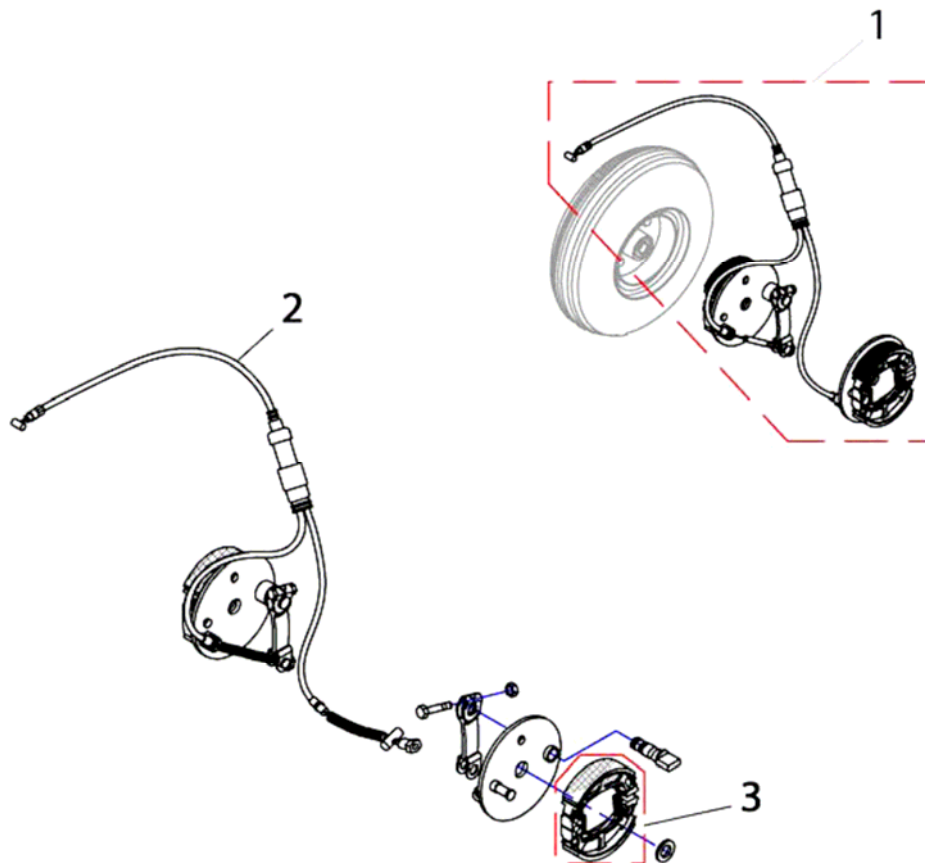


Rear Wheels & Propulsion			
Item	Part Code	Description	Qty
1	SP1521590	Differential 10 km/h	1
2	SP1518377	Motor 10 km/h	1
3	SP1505672	Lever	1
4	SP1505676	Wheel, Anti-Tipper	1
5	SP1518378	Rear Wheel Assembly	1
6	1527605	Tyre	1
Not Pictured	1527606	Inner Tube	1

All information, including pricing and specifications, subject to change without prior notice. Photographs are for illustration purposes only & may vary from actual product. Invacare®, and Yes, you can., are trademarks of Invacare Corporation. © 2009 Invacare Corporation.



## Brakes

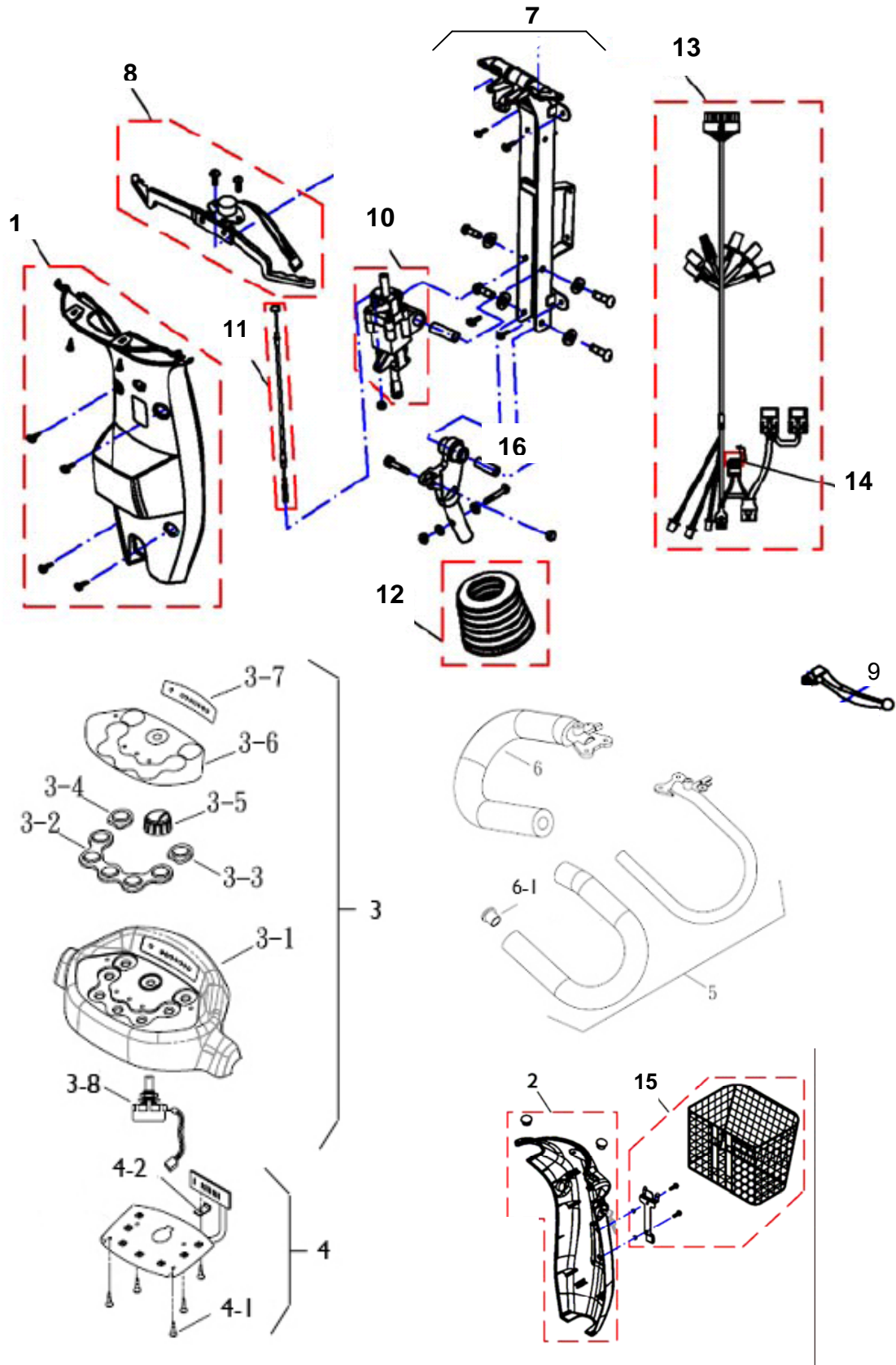


Brakes			
Item	Part Code	Description	Qty
1	SP1521589	Brake Assembly	1
2	SP1518422	Break Cable	1
3	1518418	Shoe CompBrake	1

All information, including pricing and specifications, subject to change without prior notice. Photographs are for illustration purposes only & may vary from actual product. Invacare®, and Yes, you can., are trademarks of Invacare Corporation. © 2009 Invacare Corporation.



## Steering



All information, including pricing and specifications, subject to change without prior notice. Photographs are for illustration purposes only & may vary from actual product. Invacare®, and Yes, you can., are trademarks of Invacare Corporation. © 2009 Invacare Corporation.

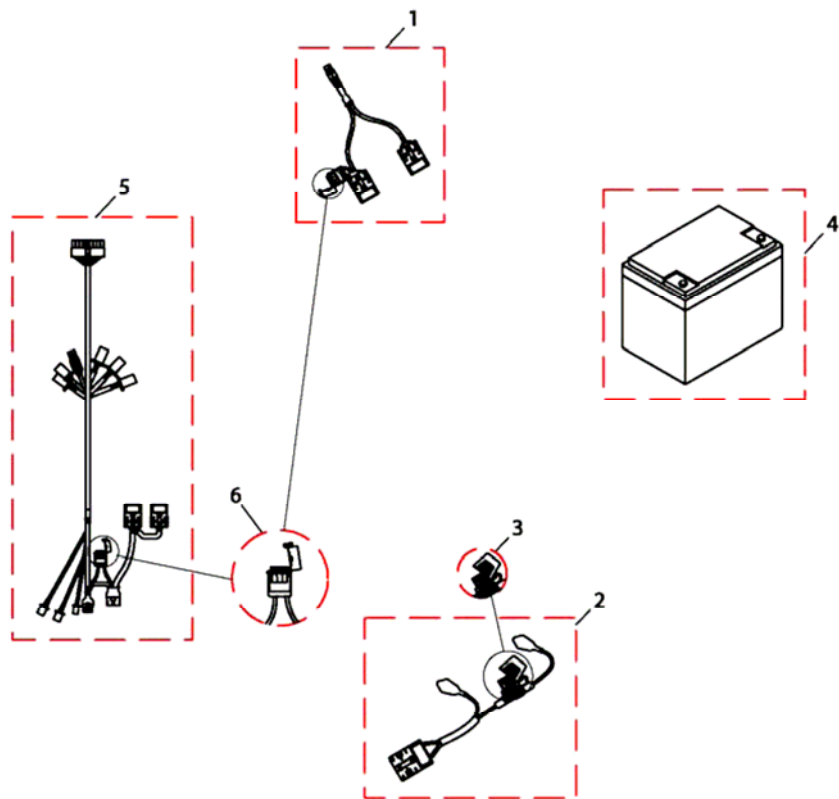


Steering			
Item	Part Code	Description	Qty
1	SP1521497	Back Cover, Tiller (Black)	1
2	SP1521495	Front Cover, Tiller (Silver)	1
2	SP1521659	Front Cover, Tiller (Blue)	1
3	SP1526435	Cover, steering upper assembly (excludes PC Board)	1
3-1	1526430	Cover, steering upper	1
3-2	1505459	Rubber Buttons (group of 5)	1
3-3	1526431	Rubber Buttons (speed reduction)	1
3-4	1526432	Rubber Buttons (inactive)	1
3-5	1505460	Knob, Speed Control	1
3-6	1526433	Sticker, cap	1
3-7	1526434	Sticker, Battery Light	1
3-8	1505462	Variable Resistor Comp.30.0KΩ	1
4	SP1527395	PC Board	1
4-1	503203-00801	Screw (5 included)	1
4-2	517307-62800	PC Board Plate	1
5	1527828	Delta Handlebar LH	1
5	1527827	Delta Handlebar RH	1
6	1527790	Grip, Handlebar	1
6-1	1485005	Plug, Handlebar	1
7	521100-62800	Steering Frame complete	1
8	SP1521575	Wig Wag (complete)	1
9	SP1521578	Lever RH and LH	Pair
10	SP1505279	Steering Adjustment Assembly	1
11	SP1521583	Cable	1
12	SP1521586	Cover, Steering Joint	1
13	SP1521576	Wire, Harness	1
14	SP1521577	Fuse 10.0 Amp.	1
15	SP1521584	Basket, Front	1

All information, including pricing and specifications, subject to change without prior notice. Photographs are for illustration purposes only & may vary from actual product. Invacare®, and Yes, you can., are trademarks of Invacare Corporation. © 2009 Invacare Corporation.



## Charging Cables & Batteries

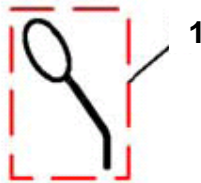


Cable & Charger			
Item	Part Code	Description	Qty
1	SP1521644	Off-Board Charging Kit	1
2	SP1521696	Wire, Battery Output	1
3	SP1505500	FUSE (70Amp)	1
4	SP1521695	Battery 12V/50Ah	1
5	SP1521576	Wire, Harness	1
6	SP1521577	Fuse 10Amp	1

All information, including pricing and specifications, subject to change without prior notice. Photographs are for illustration purposes only & may vary from actual product. Invacare®, and Yes, you can., are trademarks of Invacare Corporation. © 2009 Invacare Corporation.



## Options



## Accessories

Item	Part Code	Description	Qty
1	SP1518241	Rear Mirror	1

All information, including pricing and specifications, subject to change without prior notice. Photographs are for illustration purposes only & may vary from actual product. Invacare®, and Yes, you can., are trademarks of Invacare Corporation. © 2009 Invacare Corporation.



## **Invacare Australia**

PO Box 5002  
1 Lenton Place  
North Rocks NSW 2151 Australia.  
email: [sales@invacare.com.au](mailto:sales@invacare.com.au)  
Phone 1800 460 460  
Fax: (02) 8839 5311  
[www.invacare.com.au](http://www.invacare.com.au)

## **Invacare New Zealand**

PO Box 62-124  
4 Westfield Place  
Mt Wellington, Auckland,  
New Zealand  
Freephone 0508 468 222  
Freefax 0508 807 788  
[www.invacare.co.nz](http://www.invacare.co.nz)