



Afiscooters

Established in 1978 in Kibbutz Afikim, in the Jordan Valley, Israel.

Produced in Israel, Afiscooters is a world leader in personal mobility solutions.

At Afiscooters, we believe that the electric scooter is a convenient and cost-effective mobility solution for all ages with a wide variety of uses. We offer a wide range of models combining innovation, safety, reliability, esthetic design and value. Plenty of accessories are available to maximize comfort and convenience.

Come join the numerous of satisfied Afiscooters users around the world who have enjoyed many years of consistently reliable operation and high customer satisfaction from a leading manufacturer.



The 1980's



The 1990's



The 2000's



The 2010's



Afiscooter S

The Afiscooter S is winner of the prestigious Red Dot International Design Award. It is one of the most technologically advanced vehicles in the world of personal mobility.

The Afiscooter S combines advanced human engineering together with spectacular design. It offers an impressive driving range as well as superb maneuverability. In addition, the model features an ergonomic design to make the ride more comfortable, a programmable electronic controller, LCD control screen and low power consumption LED headlights.

The vehicle incorporates an advanced automatic control system that constantly monitors the performance and gives early warning to potential maintenance.

The batteries provide long life between charges.

For comfort and ease of use, the Afiscooter S has a fully adjustable tiller with the capacity to adjust the height and distance from the driver and an attractive integrated canopy for protection from sun and light rain.

To ensure a smooth and safe travel experience, the Breeze S has a fully adjustable orthopedic seat, full suspension, an intelligent braking system and a shock-absorbing steel frame.

Colors: Metallic Silver / Blue / Dark Grey



Afiscooter S

3-Wheel

The Afiscooter S3 has all the comfort and safety benefits of the Afiscooter S family, combined with excellent maneuverability and unrivaled ease of steering.

It offers a perfect travel experience on regular roads as well as narrow paths. An optional integrated canopy is available to protect from sun or rain.



Afiscooter S3 Single Seat

A popular model, with a front basket and lock box in the back. The control system features headlights, signal and break lights and a horn.



Afiscooter S3 Single Seat with Wide Wheels

Extra wide wheels provide excellent traction on smooth surfaces or muddy roads. Optional integrated canopy and side rain covers are available.



Afiscooter S3 Extra wide Seat with Wide Wheels and Canopy

The orthopedic wide seat has two separately adjustable head rests. Features include a large trunk and an integrated roof design for protection from sun and rain. Optional side rain covers are available.



« Scan the code
to watch the
video

Colors: 



Afiscooter S

4-Wheel

The Afiscooter S4 suspension and steering systems provide a pleasurable car-like driving experience, especially on long distance trips. High ground clearance with a fully adjustable, orthopedic seat ensures a comfortable ride on all surfaces. An optional integrated canopy is available to protect from sun or light rain.

8



« Scan the code
to watch the
video

Colors: 



reddot design award



Afiscooter S4 Single Seat with Canopy

The canopy offers excellent protection from sun and rain and has been awarded with an international design award for appearance and functionality. Rain side covers are optional.



Afiscooter S4 Single Seat

A combination of comfort and strength with a fully adjustable orthopedic seat and adjustable steering tiller. A front basket and rear lock box provide convenient travel storage. The advanced electrical system includes headlights, signal and break lights and a horn.



Afiscooter S4 Extra wide Seat with Canopy

Orthopedic seat with separately adjustable headrests and double armrests accommodate the individual needs of any user. An integrated roof design offers protection from sun and light rain. A large trunk space for storage.

9



Afiscooter S

Highlights

Adjustable reach configuration using a single button for forward/reverse



Fully adjustable swivel orthopedic seat with a movable headrest and armrests



Bright, easy to read LCD display control panel indicates speed, battery status, lighting and signaling



The sun/rain canopy is winner of the Red Dot international design award



Powerful, long-lasting, energy efficient LED headlights provide more light and a greater driving range



Improved, secure lockable rear storage
Front storage for items such as glasses and mobile phone

Afiscooter S

Specifications

		Afiscooter S4 - Single		Afiscooter S4 - Wide seat		Afiscooter S3 - Single		Afiscooter S3 - Wide seat	
Overall length		65"	165 cm	65"	165 cm	61"	155 cm	61"	155 cm
Overall width		27"	68 cm	33"	85 cm	27"	68 cm	--	--
	With wide wheels	35"	88 cm	35"	88 cm	35"	88 cm	35"	88 cm
Overall height	Without canopy	49"	125 cm	49"	125 cm	49"	125 cm	49"	125 cm
	With canopy	65"	164 cm	65"	164 cm	65"	164 cm	65"	164 cm
Ground clearance		5"	12.5 cm	5"	12.5 cm	5"	12.5 cm	5"	12.5 cm
Weight	With batteries	342 lb	155 kg	364 lb	165 kg	337 lb	153 kg	359 lb	163 kg
	Without batteries	238 lb	108 kg	260 lb	118 kg	234 lb	106 kg	256 lb	116 kg
	Add for canopy	+ 26 lb	+ 12 kg	+ 26 lb	+ 12 kg	+ 26 lb	+ 12 kg	+ 26 lb	+ 12 kg
	Add for wide wheels	+ 22 lb	+ 10 kg	+ 22 lb	+ 10 kg	+ 22 lb	+ 10 kg	+ 22 lb	+ 10 kg
Travel range		28 m	45 km	28 m	45 km	28 m	45 km	28 m	45 km
Weight capacity Inc. driver		450 lb	200 kg	450 lb	200 kg	450 lb	200 kg	450 lb	200 kg
Maximum speed		9.3 mph	15 Km/h	9.3 mph	15 Km/h	9.3 mph	15 Km/h	9.3 mph	15 Km/h
Maximun climbing angle		20%		20%		20%		20%	
Turning radius		90"	228 cm	90"	228 cm	56"	143 cm	56"	143 cm
Seating		18"	46 cm	33"	85 cm	18"	46 cm	33"	85 cm
Tires type		Pneumatic		Pneumatic		Pneumatic		Pneumatic	
Tires size	Front	4.1/3.5X6.0"		4.1/3.5X6.0"		3X10"		3X10"	
	Rear	3.5X10"		3.5X10"		3.5X10"		16X7.5-8.0"	
Battery type		Two 12V 73 Ah		Two 12V 73 Ah		Two 12V 73 Ah		Two 12V 73 Ah	
Power unit		Rear Wheel drive, 24V DC motor		Rear Wheel drive, 24V DC motor		Rear Wheel drive, 24V DC motor		Rear Wheel drive, 24V DC motor	
Color		Metallic Silver / Blue / Dark Grey		Metallic Silver / Blue / Dark Grey		Metallic Silver / Blue / Dark Grey		Metallic Silver / Blue / Dark Grey	

Tested by manufacturer, based on actual parameters.



Afiscooter M

Afiscooter-M is a powerful electric vehicle designed for service and maintenance personnel due to its impressive carrying capacity and maneuvering capabilities.

Afiscooter-M is a super strong vehicle with an advanced ergonomic design to handle loads up to 300 kg.

Afiscooter-M is equipped with an extremely large loading surface, long travel range and

superb traction. This vehicle allows particularly easy steering and a smooth driving experience, in a variety of environments: corridors, service elevators, warehouses and narrow passages.

The independent suspension system and the orthopedic seat guarantee that you will be comfortable during a full working day.



Afiscooter M

3-Wheel

Afiscooter M is a super strong vehicle with an advanced ergonomic design, to handle heavy loads. Equipped with an extremely large loading surface, long travel range and superb traction. Allows comfort during a full working day, in a variety of environments.

14



Afiscooter M Extended loading surface

The extended loading surface offers excellent extra carrying capacity. This 3 wheels model offers excellent maneuverability and unrivaled ease of steering in narrow paths.



Afiscooter M Loading surface with canopy

The integral designed Canopy provides excellent protection in any weather condition. Rain sides are optional.

15



Afiscooter M

Highlights

Easy tiller adjustment for any operator by pressing a button



Independent shock absorbers for each wheel to ensure a comfortable ride on all terrain



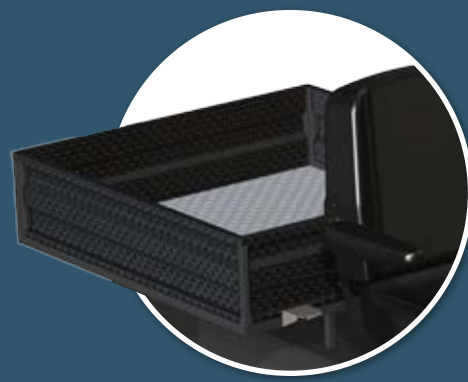
Designed sun/rain canopy as an integral part of the vehicle, for working smoothly in all weather conditions. Rain cover is optional.



Bright, easy to read LCD display control panel indicates speed, driving length, working hours' counter, battery status, lighting and signing.



A fully adjustable swiveling orthopedic seat with removable headrest and armrest.



Optional: Standard loading surface / Extended loading surface / 25 cm / 10 inch walls and a drop-down tailgate.

Afiscooter M

Specifications

		Afiscooter-M	
Overall length		89"	225 cm
Overall width		35"	90 cm
Overall height	Without canopy	49"	125 cm
	With canopy	65"	164 cm
Ground clearance		5"	12.5 cm
Rear Wheel Track	Inner	20"	50 cm
	Outer	35"	88 cm
Wheel Base		76"	192 cm
Weight	With batteries	463 lb	210 kg
	Without batteries	300 lb	136 kg
	Add for canopy	+ 26 lb	+ 12 kg
	Add for wide wheels		+ 3 kg
Travel range		33 m	50 km
Rear platform length	Short/Long	37" / 45"	95 cm / 115 cm
Rear platform width		35"	88 cm
Weight capacity Inc. driver		661 lb	300 kg
Maximum speed		7.5 mph	12 Kmh
Maximun climbing angle		13%	
Turning radius		79"	200 cm
Seating		18"	46 cm
Tires type		Pneumatic	
Tires size	Front	3X10"	
	Rear	16X7.5-8.0"	
Battery type		Two 12V 150Ah	
Power unit		Rear wheel drive, 24V DC motor 1400w / 2500w	
Controler type		SD 200 A	
Charger type		8A	
Color		Metalic Silver	

Tested by manufacturer, based on actual parameters.





SE

The classic model is a design milestone of Afiscooters and has become an icon in the world of personal electric mobility. The SE Scooter combines simplicity, reliability and usefulness for decades.

Color: Black & Chrome



SE

Provides a stable and safe ride in any environment and on any path. The strong steel chassis and rear power unit combines strength with a long driving range and impressive load capacity. An orthopedic seat offers maximum comfort and the simple and reliable electronic control system make the SE Scooter extremely easy to operate.

20



« Scan the code
to watch the
video



SE

Extra wide seat

Top selling scooter of all time, with an extra wide seat and a large rear open trunk.



SE

Single Seat

The orthopedic seat has a headrest and armrests and swivels for easy access. Includes a large rear basket.



SE Porter

Designed for service and maintenance personnel, thanks to the impressive carrying capacity, simple operation and high reliability it offers. The oversized rear platform is easy to use and can carry loads up to 200 kg/ 440 lb.

21



SE Scooter

Highlights

A balance of simplicity, reliability and classic design make the SE the world's leading personal electric vehicle



Swiveling orthopedic chair for comfort and ease of access

Easy to maneuver, quiet operation



Choice of selection: single or wide seat



Extremely sturdy large rear basket



Easy and simple operation



Large rear platform is a favorite for the service and maintenance industries

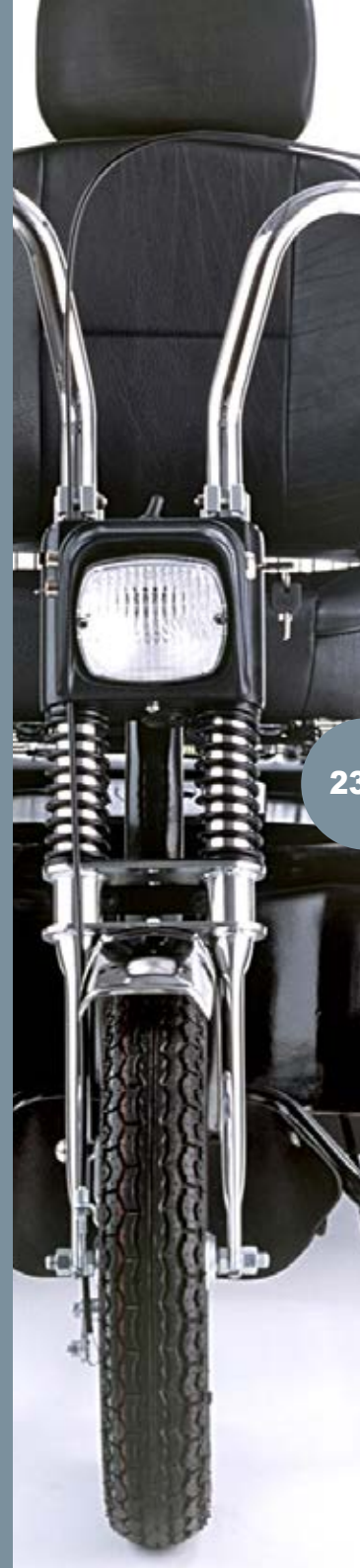
SE Scooter

Specifications

		SE - Single		SE - wide seat		SE Porter	
Overall length		62"	158 cm	62"	158 cm	78"	197 cm
Overall width		29"	73 cm	36"	91 cm	36"	91 cm
Overall height	Without canopy	49"	124 cm	40"	101 cm	40"	101 cm
	With canopy	--	--	70"	177 cm	--	--
Ground clearance		5"	12.5 cm	5"	12.5 cm	5"	12.5 cm
Weight	With batteries	322 lb	146 kg	359 lb	163 kg	381 lb	173 kg
	Without batteries	218 lb	99 kg	256 lb	116 kg	278 lb	126 kg
Travel range		28 m	45 km	28 m	45 km	28 m	45 km
Weight capacity Inc. driver		500 lb*	200 kg	500 lb*	200 kg	500 lb*	200 kg
Maximum speed		9.3 mph	15 Km/h	7.5 mph	12 Km/h	6.3 mph	10 Km/h
Max. climbing angle		21%		21%		18%	
Turning radius		45"	115 cm	45"	115 cm	51"	130 cm
Seating		18"	46 cm	33"	85 cm	33"	85
Tires type		Pneumatic		Pneumatic		Pneumatic	
Tires size	Front	2.75X10"		2.75X10"		2.75X10"	
	Rear	2.75X14"		2.75X14"		2.75X14"	
Battery type		Two 12V 73 Ah		Two 12V 73 Ah		Two 12V 73 Ah	
Power unit		Rear Wheel drive, 24V DC motor		Rear Wheel drive, 24V DC motor		Rear Wheel drive, 24V DC motor	
Rear platform size		--		--		35X29"	90X73 cm
Color		black & chrome		black & chrome		black & chrome	

* U.S model

Tested by manufacturer, based on actual parameters.





Afiscooter C

The Afiscooter C has set new standards in the mid-sized scooter category; the bestselling category in the world. Afiscoters has made no compromises with the Afiscooter C. The design of the vehicle has implemented the best ergonomics and technology usually found in the heavy scooter category.

The Afiscooter C is appropriate for both indoor and outdoor use. The scooter size allows for perfect mobility around town, on narrow sidewalks and convenient maneuvering in shopping centers. There is a Shabbat option for the observant and it is compatible with many vehicle lifts.

Colors:
Metallic Blue / Metallic Silver / Cherry Red



Afiscooter C

The outstanding design of the Afiscooter C along with the user comfort facilities: a fully adjustable swiveling orthopedic seat, the Delta tiller that provides easy steering and is fully adjustable to accommodate any driver. A top quality drive is guaranteed with an advanced suspension system and separate shock absorbers on each wheel. The electrical system includes head lights, a rear light, turning signals, hazard, brake lights and a horn for safety. The Afiscooter C features optional rear basket to complete the travel experience.



<< Scan the code to watch the video

Colors: 



Afiscooter C3

Three wheels enable a tight turning radius. Most suitable for narrow aisles and places that require maximum maneuverability.



Afiscooter C4

4-wheel independent suspension system makes for a smooth and comfortable ride. An optional canopy is available for protection from sun.



Afiscooter C4

Standard enforced mounting point for a large rear basket or other accessories.





Afiscooter C

Highlights



A fully adjustable orthopedic seat provides comfort while driving and swivels for ease of boarding



All operational controls including lights, horn and battery display are conveniently located in the center of the one-hand operation Delta handlebar



Fits standard car lifts for the traveling user



Easy tiller adjustment for any driver



Plenty of storage space in standard front basket and optional large rear basket

Afiscooter C

Specifications

Specifications		Afiscooter C4		Afiscooter C3	
Overall length		52"	132 cm	51"	130 cm
Overall width		26"	67 cm	26"	67 cm
Overall height		50"	126 cm	50"	126 cm
Ground clearance		4"	10 cm	4"	10 cm
Weight	With batteries	269 lb	122 kg	225 lb	102 kg
	Without batteries	205 lb	93 kg	161 lb	73 kg
Travel range		25 m	40 km	25 m	40 km
Weight capacity Inc. driver		330 lb*	150 kg	330 lb*	135 kg
Maximum speed		9.3 mph	15 Km/h	9.3 mph	15 Km/h
Max. climbing angle		16%		16%	
Turning radius		67"	170 cm	50"	128 cm
Seating		18"	46 cm	18"	46 cm
Tires type		Pneumatic		Pneumatic	
Tires size	Front	4.1/3.5X6"		4.1/3.5X6"	
	Rear	4.1/3.5X6"		4.1/3.5X6"	
Battery type		Two 12V 45-50 Ah		Two 12V 45-50 Ah	
Power unit		Rear Wheel drive, 24V DC motor		Rear Wheel drive, 24V DC motor	
Color		Metallic Silver / Blue / Cherry Red			

* U.S model

Tested by manufacturer, based on actual parameters.



Caddy

The world's first folding scooter. The Caddy allows for compact storage at home, transport in the trunk of the family car or on a plane. Featuring a strong light weight aluminum chassis and easy front-wheel drive, the vehicle provides maximum maneuverability and durability. It takes just a few seconds to fold or open the Caddy which makes it the ideal scooter for trips abroad. Color: blue



« Scan the code to watch the video

Quick folding for transport in the trunk of a car



Easy disassemble into five light-weight parts



Caddy Specifications

		Caddy	
Overall length		48"	121 cm
Overall width		24"	61 cm
Overall height		38"	97 cm
Ground clearance		3"	8 cm
Weight	With batteries	93 lb	42 kg
	Without batteries	62 lb	28 kg
	Weight of heaviest part	37 lb	17 kg
Travel range		12 m	20 km
Weight capacity Inc. driver		220 lb	100 kg
Maximum speed		4 mph	6 Km/h
Max. climbing angle		6%	
Turning radius		41"	105 cm
Seating		19"	48 cm
Tires type		Full Tire	
Tires size	Front	250X50 mm	
	Rear	250X50 mm	
Battery type		Two 12V 17 Ah	
Power unit		Front Wheel drive, 24V DC motor	
Color		Blue	

Tested by manufacturer, based on actual parameters.



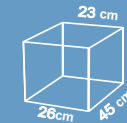
Wide seat



Crutch/Rollator holder



Twist Throttle



Lock box
(Afiscooter-S)



Accessories bar



Extra wide wheels



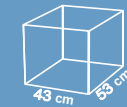
Extra wide Seat



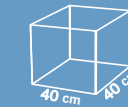
Mirrors



Footrests



Rear box
(Afiscooter, SE)



Rear basket
(SE)



Integral canopy
(Afiscooter-S)



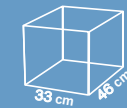
Golf equipment facility



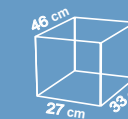
Seat belt



Foot control mechanism



Closed rear box
(Afiscooter-S)



Rear basket
(Afiscooter-C)



Rain sides
(Afiscooter-S)



		Afiscooter S3		Afiscooter S4		Afiscooter M		SE		SE Porter		Afiscooter C3		Afiscooter C4		Caddy	
Overall length		61"	155 cm	65"	165 cm	89"	225 cm	62"	158 cm	78"	197 cm	51"	130 cm	52"	132 cm	48"	121 cm
Overall width		27"	68 cm	27"	68 cm	35"	90 cm	29"	73 cm	36"	91 cm	26"	67 cm	26"	67 cm	24"	61 cm
Overall height		49"	125 cm	49"	125 cm	49"	125 cm	49"	124 cm	40"	101 cm	50"	126 cm	50"	126 cm	38"	97 cm
Ground clearance		5"	12.5 cm	5"	12.5 cm	5"	12.5 cm	5"	12.5 cm	5"	12.5 cm	4"	10 cm	4"	12.5 cm	3"	8 cm
Weight	With batteries	337 lb	153 kg	342 lb	155 kg	463 lb	210 kg	322 lb	146 kg	381 lb	173 kg	225 lb	102 kg	269 lb	122 kg	93 lb	42 kg
	Without batteries	234 lb	106 kg	238 lb	108 kg	300 lb	136 kg	218 lb	99 kg	278 lb	126 kg	161 lb	73 kg	205 lb	93 kg	62 lb	28 kg
	Weight of heaviest part	--	--	--	--	--	--	--	--	--	--	--	--	--	--	37 lb	17 kg
Travel range		28 m	45 km	28 m	45 km	33 m	50 km	28 m	45 km	28 m	45 km	25 m	40 km	25 m	40 km	12 m	20 km
Weight capacity Inc. driver		450 lb	200 kg	450 lb	200 kg	661 lb*	300 kg	500 lb*	200 kg	500 lb*	200 kg	330 lb*	135 kg	330 lb*	150 kg	220 lb	100 kg
Maximum speed		9.3 mph	15 Km/h	9.3 mph	15 Km/h	7.5 mph	12 Km/h	9.3 mph	15 Km/h	6.3 mph	10 Km/h	9.3 mph	15 Km/h	9.3 mph	15 Km/h	3.7 mph	6 Km/h
Max. climbing angle		20%		20%		13%		21%		18%		16%		16%		6%	
Turning radius		56"	143 cm	90"	228 cm	79"	200 cm	45"	115 cm	51"	130 cm	50"	128 cm	67"	170 cm	41"	105 cm
Seating		18"	46 cm	18"	46 cm	18"	46 cm	18"	46 cm	33"	85 cm	18"	46 cm	18"	46 cm	19"	48 cm
Tires type		Pueumatic		Pueumatic		Pueumatic		Pneumatic		Pneumatic		Pueumatic		Pueumatic		Full Tire	
Tires size	Front	3x10"		4.1/3x.5x6"		3x10"		2.75X10"		2.75X10"		4.1/3x.5x6"		4.1/3X.5X6"		250X50 mm	
	Rear	3.5x10"		3.5x10"		16x7.5-8.0"		2.75X14"		2.75X14"		4.1/3x.5x6"		4.1/3X.5X6"		250X50 mm	
Battery type		Two 12V 73 Ah		Two 12V 73 Ah		Two 12V 150 Ah		Two 12V 73 Ah		Two 12V 73 Ah		Two 12V 45-5 Ah		Two 12V 45-5 Ah		Two 12V 17 Ah	
Power unit		Rear 24V DC		Rear 24V DC		Rear wheel drive, 24V DC motor		Rear 24V DC		Rear 24V DC		Rear 24V DC		Rear 24V DC		Front 24V DC	
Color		Metallic Silver / Blue / Dark Grey		Metallic Silver / Blue / Dark Grey		Metallic Silver		black & chrome		black & chrome		Metallic Silver / Blue / Cherry Red		Metallic Silver / Blue / Cherry Red		blue	

* U.S model
Tested by manufacturer, based on actual parameters | The above specifications are subject to change without notice.





Contact Us

For further information contact us at:

International:

Tel: +(972) 4 - 6754180

Fax: +(972) 4 - 6751456

USA:

Tel: (800) 809 - 3010

Fax: (800) 466 - 1171

Email: mainbox@Afiscooters.com

www.Afiscooters.com



« Scan the code
to visit our
web site

