

# Generic Basic Portable Dismantlable Electric Chair : Guide

Basic Portable chairs are **designed** to travel in shopping centres, cruise ships or in buildings.

**This Chair CAN be used in the following situations:**

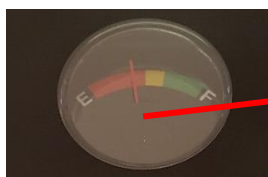
- At homes or in buildings
- Shopping centres, nursing homes
- Cruise Ships, Air Travel (plane)

## Battery Life:

Your chair should last you **around 2-3hrs** of intermittent driving or **a range of 10-15km**.  
*(10km for 12AH batteries, 13-15km for 18AH batteries)*

12AH Batteries	Go-Chair, Wee-Seat
18AH Batteries	Ezi-Go Chair, LiteRider, Go-Chair Generation

**ALWAYS** charge your chair after use – and also charge overnight and up until your next use. You will not overcharge the batteries, as the charger cuts out when the batteries are full.



The chair has lights or a battery gauge indicator. When the lights/gauge on your Chair drop into the **Yellow area**, you should immediately start to finish your journey.



If you get down to the **red lights / to near Empty**, it can cause the battery to completely flatten and prevent the chair charger from being able to charge the batteries back up.

**Do not let the battery light reach down to the red area.**

**It could destroy the battery and it may be the next person who suffers for this error.**

## Tips:

Always turn off the chair before getting off – this prevents the chair moving if you accidentally touch the driving mechanism.

Check your charger to make sure there is no loose cords, and that your wall socket power is on. If a cord is not plugged in properly, your batteries will not charge. “Green” means fully charged or that there is power, while “red” or “yellow” means charging.

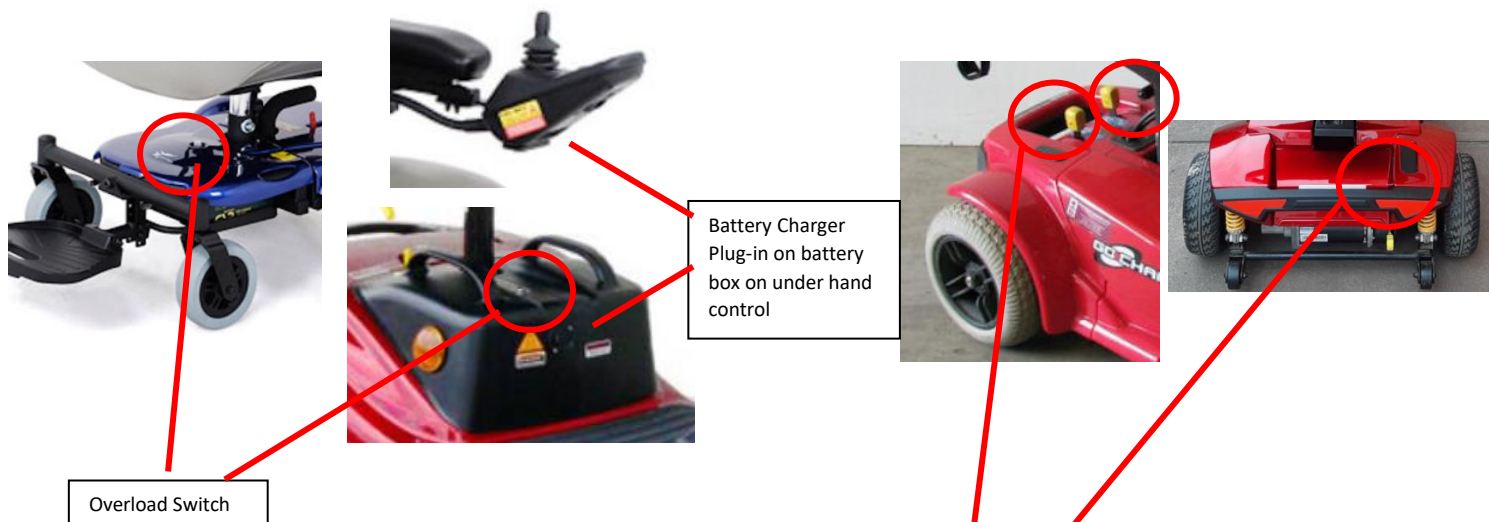


Check that this cord is not 'loose'. Make sure it is plugged properly into the charger.



## Issues: Customer Problem Solving

Issue	Check	Solution
Chair not driving	Is the charger plugged in?	Remove the charger, turn off, then on, then test
Chair not driving	Is <b>one of the two</b> freewheel lever engaged	Put <b>both</b> freewheel levers into the drive position, turn off, then on, then test. Please refer to images below for the Break Lever position on the chair
Chair not driving	Has the chair remained on for a long period of time? ( <i>timed out</i> )	Turn off, then on, then test.
Chair not driving	Are you trying to drive before the chair is turned on?	Do not press the forward/reverse driving mechanisms for 3 seconds after turning on.
Chair continually stops driving / not going	Is the battery box in place correctly?	Ensure the battery box is sitting straight in the battery area of the machine. Ensure the battery area is free of debris and the metal connectors on the bottom of the box and base of the Chair are clean.
Chair stopped driving	Are the batteries charged?	Check the battery gauge and return home if necessary. <b>If the batteries are not lasting in the expected timeframe of the battery size, please bring battery box back to organise a replacement.</b>
Chair stopped driving	Has the <b>overload switch/reset button</b> been triggered?	Push the overload switch button on the battery box, turn off, then on, then test. Please refer to images below for the Overload switch position on the battery box
Can't Assemble chair together	Are you trying to assemble chair together on uneven ground? ( <i>two different tiles on the footpath, on gravel or grass, for example</i> )	Move chair onto smooth, flat ground, and try again
Forgotten how to dismantle chair	Have you looked at our manual on our website?	<a href="https://www.mobilityscootersforhire.com.au">https://www.mobilityscootersforhire.com.au</a>
<b>Chair still not working after checking all the above</b>	Have you tried dismantling the chair and then putting it back together?	Dismantle chair, put it back together, then test. If it still doesn't work, please contact us on 0406826268 <b>during business hours.</b> <b><u>Finish your journey until we are next open if outside business hours.</u></b>



If all the power from your mobility chair "cuts out" [*the chair doesn't go, the lights for the battery indicator don't turn on, the horn doesn't work, it becomes "dead"*], check if the **overload switch** has popped out on the battery box.

On the battery box is a black button. Press it in and see if your chair turns on. If it does turn on, give your machine a few minutes to cool down before continuing to drive.

It may still struggle if your weight is around the 110kg mark and cause the overload switch to pop out as the power generated to try and get you up the ramp is too much for the machine to handle.

### Brake Lever:

"In-gear" or "Lock Mode" means you cannot push the chair. The wheels are locked and the Brake is on.

"Out of Gear" or "Free wheel" means the chair can now be pushed manually, the wheels are not locked.

**NOTE: If the chair is "Out of Gear", you CANNOT drive the chair. The chair must be "In Gear" in order to drive the chair.**